

3/8" DRIVE



3/8" DRIVE DEEP SOCKETS, 6 POINT, METRIC

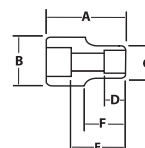
High-Polished Chrome Finish

Product Code	Size (MM)	A OAL (Inches)	B Drive End Diameter (Inches)	C Working End Diameter (Inches)	D Broach Depth (Inches)	E Bolt Clearance Depth (Inches)	F Bolt Clearance Diameter (Inches)	Nose Length (Inches)
31706	6	2 1/2	1 1/16	3/8	5/8	1 9/16	7/32	1 7/32
31707	7	2 1/2	1 1/16	7/16	5/8	1 9/16	1/4	1 7/32
31708	8	2 1/2	1 1/16	7/16	5/8	1 9/16	9/32	1 7/32
31709	9	2 1/2	1 1/16	17/32	5/8	1 9/16	5/16	1 7/32
31710	10	2 1/2	1 1/16	9/16	1	1 11/16	3/8	1 7/32
31711	11	2 1/2	1 1/16	5/8	1	1 25/32	13/32	1 7/32
31712	12	2 1/2	1 1/16	11/16	1	1 25/32	7/16	-
31713	13	2 1/2	23/32	23/32	1	1 31/32	1/2	-
31714	14	2 1/2	3/4	3/4	1	2	17/32	-
31715	15	2 1/2	13/16	13/16	1	1 15/16	9/16	-
31716	16	2 1/2	7/8	7/8	1	1 29/32	19/32	-
31717	17	2 1/2	15/16	15/16	1	2	21/32	-
31718	18	2 1/2	31/32	31/32	1 1/16	1 29/32	11/16	-
31719	19	2 1/2	1	1	1 3/32	1 31/32	23/32	-

Fed. Spec: ANSI B107.5



31712 31706



31944 8 Piece 3/8" Drive Deep 6 Point Socket Set on Clip Rail

Contents Include:

Product Code	Size (MM)	Product Code	Size (MM)	Product Code	Size (MM)
31710	10	31713	13	31716	16
31711	11	31714	14	31717	17
31712	12	31715	15		

31945 14 Piece 3/8" Drive Deep 6 Point Socket Set on Clip Rail

Contents Include:

Product Code	Size (MM)	Product Code	Size (MM)	Product Code	Size (MM)
31706	6	31711	11	31716	16
31707	7	31712	12	31717	17
31708	8	31713	13	31718	18
31709	9	31714	14	31719	19
31710	10	31715	15		

Features

- SUPERTORQUE® lobular openings for greater turning power without deforming the fastener.
- Designed for quick engagement on 6 point fasteners.



31944



31945

