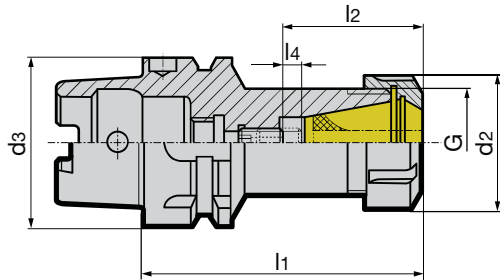


Product information

- balancing quality: G2.5 / 25.000 rev./min or U< 1 gmm
- HSK-A to ISO 12164-1/DIN 69893-1
- for collet chucks with adjustment angle 8° according to DIN ISO 15488

Scope of delivery

- incl. retaining nut article no. 4306 and adjustment screw article no. 4902
- order collet, article no. 4307, clamping key, article no. 4913 and coolant supply set, article no. 4949 separately



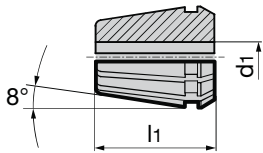
										Series no.	4304
HSK-A d ₃	clamping range	d ₂ mm	G	l ₁ mm	l ₂ mm	l ₄ mm	incl. adjustment screw art. no. 4902...	kg	Code no.	EDP Number	
32	ER 11 Ø 0.5-7.0	19	M14 x 0.75	55	25	6	11.012	0.20	11.032	9043040110320	
32	ER 16 Ø 0.5-10.0	28	M22 x 1.5	80	34	6	16.012	0.30	16.032	9043040160320	
32	ER 20 Ø 0.5-13.0	34	M25 x 1.5	70	40	8	16.012	0.30	20.032	9043040200320	
40	ER 16 Ø 0.5-10.0	28	M22 x 1.5	80	34	6	16.012	0.40	16.040	9043040160400	
40	ER 25 Ø 0.5-16.0	42	M32 x 1.5	80	44	8	25.014	0.50	25.040	9043040250400	
40	ER 32 Ø 1.0-20.0	50	M40 x 1.5	100	50	10	32.020	0.80	32.040	9043040320400	
50	ER 16 Ø 0.5-10.0	28	M22 x 1.5	100	34	6	16.012	0.70	16.050	9043040160500	
50	ER 25 Ø 0.5-16.0	42	M32 x 1.5	100	44	8	25.014	1.00	25.050	9043040250500	
50	ER 25 Ø 0.5-16.0	42	M32 x 1.5	80	44	8	25.014	0.80	25.150	9043040251500	
50	ER 32 Ø 1.0-20.0	50	M40 x 1.5	100	50	10	32.020	1.00	32.050	9043040320500	
63	ER 16 Ø 0.5-10.0	28	M22 x 1.5	100	34	6	16.012	0.90	16.063	9043040160630	
63	ER 16 Ø 0.5-10.0	28	M22 x 1.5	160	34	6	16.012	1.20	16.163	9043040161630	
63	ER 25 Ø 0.5-16.0	42	M32 x 1.5	80	42	6	25.014	1.00	25.063	9043040250630	
63	ER 25 Ø 0.5-16.0	42	M32 x 1.5	100	42	6	25.014	1.20	25.163	9043040251630	
63	ER 32 Ø 1.0-20.0	50	M40 x 1.5	100	50	10	32.020	1.40	32.063	9043040320630	
63	ER 40 Ø 3.0-26.0	63	M50 x 1.5	120	56	10	32.020	1.90	40.063	9043040400630	
80	ER 32 Ø 1.0-20.0	50	M40 x 1.5	100	50	10	32.020	1.90	32.080	9043040320800	
80	ER 32 Ø 1.0-20.0	50	M40 x 1.5	160	50	10	32.020	2.80	32.180	9043040321800	
80	ER 40 Ø 3.0-26.0	63	M50 x 1.5	120	56	10	32.020	2.80	40.080	9043040400800	
100	ER 32 Ø 1.0-20.0	50	M40 x 1.5	100	50	10	32.020	2.80	32.100	9043040321000	
100	ER 32 Ø 1.0-20.0	50	M40 x 1.5	160	50	10	32.020	3.60	32.101	9043040321010	
100	ER 40 Ø 3.0-26.0	63	M50 x 1.5	120	56	10	32.020	3.60	40.100	9043040401000	

Product information

- the clamping range of collet, article no. 4307, is to be applied as indicated. For intermediate sizes as i.e. for Ø 6.3 mm (nom. size ER20) order collet d1 = 7.0 mm - 6.0 mm (Order no. 7.020)
 - concentricity error max. 10 µm
- clamping range:
 ER11: Ø 0.5 - Ø 7.0
 ER16: Ø 0.5 - Ø 10.0
 ER20: Ø 0.5 - Ø 13.0
 ER25: Ø 0.5 - Ø 16.0
 ER32: Ø 0.5 - Ø 20.0
 ER40: Ø 0.5 - Ø 26.0

Ordering example:

Ø d1 = 2.5
 nom. size = ER 20
 article no./Order no. = 4307 02,520
 (d1 = 7.0 mm - 6.0 mm)



Series no. 4307

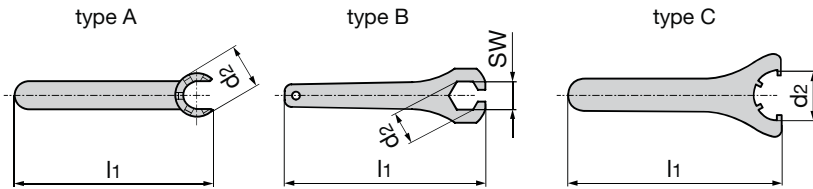
nom. size	for clamping range d1 mm	l1 mm	Code no.	EDP Number
ER11	1.0-0.5	18.0	1.011	9043070010110
ER11	1.5-1.0	18.0	1.511	9043070015110
ER11	2.0-1.5	18.0	2.011	9043070020110
ER11	2.5-2.0	18.0	2.511	9043070025110
ER11	3.0-2.5	18.0	3.011	9043070030110
ER11	4.0-3.5	18.0	4.011	9043070040110
ER11	5.0-4.5	18.0	5.011	9043070050110
ER11	6.0-5.5	18.0	6.011	9043070060110
ER11	7.0-6.5	18.0	7.011	9043070070110
ER16	1.0-0.5	27.5	1.016	9043070010160
ER16	1.5-1.0	27.5	1.516	9043070015160
ER16	2.0-1.0	27.5	2.016	9043070020160
ER16	2.5-1.5	27.5	2.516	9043070025160
ER16	3.0-2.0	27.5	3.016	9043070030160
ER16	4.0-3.0	27.5	4.016	9043070040160
ER16	5.0-4.0	27.5	5.016	9043070050160
ER16	6.0-5.0	27.5	6.016	9043070060160
ER16	7.0-6.0	27.5	7.016	9043070070160
ER16	8.0-7.0	27.5	8.016	9043070080160
ER16	9.0-8.0	27.5	9.016	9043070090160
ER16	10.0-9.0	26.0	10.016	9043070100160
ER20	1.0-0.5	31.5	1.020	9043070010200
ER20	1.5-1.0	31.5	1.520	9043070015200
ER20	2.0-1.0	31.5	2.020	9043070020200
ER20	2.5-1.5	31.5	2.520	9043070025200
ER20	3.0-2.0	31.5	3.020	9043070030200
ER20	4.0-3.0	31.5	4.020	9043070040200
ER20	5.0-4.0	31.5	5.020	9043070050200
ER20	6.0-5.0	31.5	6.020	9043070060200
ER20	7.0-6.0	31.5	7.020	9043070070200
ER20	8.0-7.0	31.5	8.020	9043070080200
ER20	9.0-8.0	31.5	9.020	9043070090200
ER20	10.0-9.0	31.5	10.020	9043070100200
ER20	11.0-10.0	31.5	11.020	9043070110200
ER20	12.0-11.0	31.5	12.020	9043070120200
ER20	13.0-12.0	31.5	13.020	9043070130200
ER25	1.0-0.5	34.0	1.025	9043070010250
ER25	1.5-1.0	34.0	1.525	9043070015250
ER25	2.0-1.0	34.0	2.025	9043070020250
ER25	2.5-1.5	34.0	2.525	9043070025250
ER25	3.0-2.0	34.0	3.025	9043070030250
ER25	4.0-3.0	34.0	4.025	9043070040250
ER25	5.0-4.0	34.0	5.025	9043070050250
ER25	6.0-5.0	34.0	6.025	9043070060250
ER25	7.0-6.0	34.0	7.025	9043070070250
ER25	8.0-7.0	34.0	8.025	9043070080250

Tool holders

				Series no.	4307
nom. size	for clamping range d ₁ mm	l ₁ mm	Code no.	EDP Number	
ER25	9 to 8	34	9.025	9043070090250	
ER25	10 to 9	34	10.025	9043070100250	
ER25	11 to 10	34	11.025	9043070110250	
ER25	12 to 11	34	12.025	9043070120250	
ER25	13 to 12	34	13.025	9043070130250	
ER25	14 to 13	34	14.025	9043070140250	
ER25	15 to 14	34	15.025	9043070150250	
ER25	16 to 15	34	16.025	9043070160250	
ER32	2 to 1.5	40	2.032	9043070020320	
ER32	2.5 to 2	40	2.532	9043070025320	
ER32	3 to 2.5	40	3.032	9043070030320	
ER32	4 to 3	40	4.032	9043070040320	
ER32	5 to 4	40	5.032	9043070050320	
ER32	6 to 5	40	6.032	9043070060320	
ER32	7 to 6	40	7.032	9043070070320	
ER32	8 to 7	40	8.032	9043070080320	
ER32	9 to 8	40	9.032	9043070090320	
ER32	10 to 9	40	10.032	9043070100320	
ER32	11 to 10	40	11.032	9043070110320	
ER32	12 to 11	40	12.032	9043070120320	
ER32	13 to 12	40	13.032	9043070130320	
ER32	14 to 13	40	14.032	9043070140320	
ER32	15 to 14	40	15.032	9043070150320	
ER32	16 to 15	40	16.032	9043070160320	
ER32	17 to 16	40	17.032	9043070170320	
ER32	18 to 17	40	18.032	9043070180320	
ER32	19 to 18	40	19.032	9043070190320	
ER32	20 to 19	40	20.032	9043070200320	
ER40	4 to 3	46	4.040	9043070040400	
ER40	5 to 4	46	5.040	9043070050400	
ER40	6 to 5	46	6.040	9043070060400	
ER40	7 to 6	46	7.040	9043070070400	
ER40	8 to 7	46	8.040	9043070080400	
ER40	9 to 8	46	9.040	9043070090400	
ER40	10 to 9	46	10.040	9043070100400	
ER40	11 to 10	46	11.040	9043070110400	
ER40	12 to 11	46	12.040	9043070120400	
ER40	13 to 12	46	13.040	9043070130400	
ER40	14 to 13	46	14.040	9043070140400	
ER40	15 to 14	46	15.040	9043070150400	
ER40	16 to 15	46	16.040	9043070160400	
ER40	17 to 16	46	17.040	9043070170400	
ER40	18 to 17	46	18.040	9043070180400	
ER40	19 to 18	46	19.040	9043070190400	
ER40	20 to 19	46	20.040	9043070200400	
ER40	21 to 20	46	21.040	9043070210400	
ER40	22 to 21	46	22.040	9043070220400	
ER40	23 to 22	46	23.040	9043070230400	
ER40	24 to 23	46	24.040	9043070240400	
ER40	25 to 24	46	25.040	9043070250400	
ER40	26 to 25	46	26.040	9043070260400	

Product information

- for clamping nuts
- Type A with special hook key for clamping nuts
System DIN 6499 mini design
- Type B for clamping nuts with hexagonal design
- Type C for clamping nuts for external slots



Series no.

4913

nom. size mm	type	l ₁ mm	for ER d ₂ mm	SW	EDP Number
ER16 mini	A	122	22	-	9049130162000
ER20 mini	A	139	28	-	9049130202000
ER25 mini	A	143	35	-	9049130252000
ER11	B	141	19	17	9049130110000
ER16	B	178	28	25	9049130160000
ER16	C	161	32	-	9049130160320
ER20	B	200	34	30	9049130200000
ER20	C	183	35	-	9049130201000
ER25	C	210	42	-	9049130250000
ER32	C	250	50	-	9049130320000
ER40	C	290	63	-	9049130400000

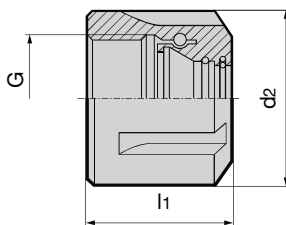
Tool holders

Product information

- for collets DIN ISO 15488
- for application with internal cooling IC/ER for sealing washer
- for increased clamping version ER or IC/ER with glide ring
- suitable for up to 150 bar coolant pressure

Scope of delivery

- version for internal cooling IC/ER: order sealing washer article no. 4335 separately
- IC/ER versions for internal cooling



Series no.

4306

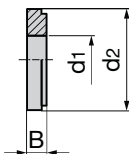
for sealing washer no. 4335	with glide ring	nom. size	d ₂ mm	l ₁ mm	G	max. torque Nm	EDP Number
–	–	ER16 mini	22	18.0	M19x1.0	55	9043060162000
–	–	ER20 mini	28	19.0	M24x1.0	75	9043060202000
–	–	ER25 mini	35	20.0	M30x1.0	100	9043060252000
–	–	ER11	19	11.3	M14x0.75	25	9043060110000
–	–	ER16	28	17.5	M22x1.5	55	9043060160000
–	–	ER20	34	19.0	M25x1.5	75	9043060200000
–	–	ER25	42	20.0	M32x1.5	100	9043060250000
–	–	ER32	50	22.5	M40x1.5	140	9043060320000
–	–	ER40	63	25.5	M50x1.5	200	9043060400000
x	–	IC/ER16 mini	22	22.0	M19x1.0	55	9043060163000
x	–	IC/ER20 mini	28	24.0	M24x1.0	75	9043060203000
x	–	IC/ER25 mini	35	25.0	M30x1.0	100	9043060253000
x	–	IC/ER16	28	22.5	M22x1.5	55	9043060166000
x	–	IC/ER20	34	24.0	M25x1.5	75	9043060206000
x	–	IC/ER25	42	25.0	M32x1.5	100	9043060256000
x	–	IC/ER32	50	27.5	M40x1.5	140	9043060326000
x	–	IC/ER40	63	30.5	M50x1.5	200	9043060406000
–	x	ER16	28	20.3	M22x1.5	55	9043060164000
–	x	ER20	34	21.8	M25x1.5	75	9043060204000
–	x	ER25	42	22.4	M32x1.5	100	9043060254000
–	x	ER32	50	25.0	M40x1.5	140	9043060324000
–	x	ER40	63	28.3	M50x1.5	200	9043060404000
x	x	IC/ER16	28	22.7	M22x1.5	55	9043060165000
x	x	IC/ER20	34	24.2	M25x1.5	75	9043060205000
x	x	IC/ER25	42	25.2	M32x1.5	100	9043060255000
x	x	IC/ER32	50	27.4	M40x1.5	140	9043060325000
x	x	IC/ER40	63	30.7	M50x1.5	200	9043060405000

Product information

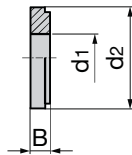
- the application range of sealing washer, article no. 4325, is from nom.-Ø d1 to the next dimension below, i.e. for Ø 6.3 mm (nom. size ER20) order sealing washer d1 = 6.5 mm (Order no. 6.520).
- suitable for up to 150 bar coolant pressure

Ordering example

Ø d1 = 3.5
 nom. size = ER 20
 article no./Order no. = 4335 3.520



						Series no.	4335
nominal size	d1 mm	Sealing Range	d2 mm	B mm	Code no.	EDP Number	
ER16	3	2.5 to 3	13	4	3.016	9043350030160	
ER20	3	2.5 to 3	16	4	3.020	9043350030200	
ER25	3	2.5 to 3	21	4	3.025	9043350030250	
ER32	3	2.5 to 3	27	4	3.032	9043350030320	
ER16	3.5	3 to 3.5	13	4	3.516	9043350035160	
ER20	3.5	3 to 3.5	16	4	3.520	9043350035200	
ER25	3.5	3 to 3.5	21	4	3.525	9043350035250	
ER32	3.5	3 to 3.5	27	4	3.532	9043350035320	
ER40	3.5	3 to 3.5	33.5	4	3.540	9043350035400	
ER16	4	3.5 to 4	13	4	4.016	9043350040160	
ER20	4	3.5 to 4	16	4	4.020	9043350040200	
ER25	4	3.5 to 4	21	4	4.025	9043350040250	
ER32	4	3.5 to 4	27	4	4.032	9043350040320	
ER40	4	3.5 to 4	33.5	4	4.040	9043350040400	
ER16	4.5	4 to 4.5	13	4	4.516	9043350045160	
ER20	4.5	4 to 4.5	16	4	4.520	9043350045200	
ER25	4.5	4 to 4.5	21	4	4.525	9043350045250	
ER32	4.5	4 to 4.5	27	4	4.532	9043350045320	
ER40	4.5	4 to 4.5	33.5	4	4.540	9043350045400	
ER16	5	4.5 to 5	13	4	5.016	9043350050160	
ER20	5	4.5 to 5	16	4	5.020	9043350050200	
ER25	5	4.5 to 5	21	4	5.025	9043350050250	
ER32	5	4.5 to 5	27	4	5.032	9043350050320	
ER40	5	4.5 to 5	33.5	4	5.040	9043350050400	
ER16	5.5	5 to 5.5	13	4	5.516	9043350055160	
ER20	5.5	5 to 5.5	16	4	5.520	9043350055200	
ER25	5.5	5 to 5.5	21	4	5.525	9043350055250	
ER32	5.5	5 to 5.5	27	4	5.532	9043350055320	
ER40	5.5	5 to 5.5	33.5	4	5.540	9043350055400	
ER16	6	5.5 to 6	13	4	6.016	9043350060160	
ER20	6	5.5 to 6	16	4	6.020	9043350060200	
ER25	6	5.5 to 6	21	4	6.025	9043350060250	
ER32	6	5.5 to 6	27	4	6.032	9043350060320	
ER40	6	5.5 to 6	33.5	4	6.040	9043350060400	
ER16	6.5	6 to 6.5	13	4	6.516	9043350065160	
ER20	6.5	6 to 6.5	16	4	6.520	9043350065200	
ER25	6.5	6 to 6.5	21	4	6.525	9043350065250	
ER32	6.5	6 to 6.5	27	4	6.532	9043350065320	
ER40	6.5	6 to 6.5	33.5	4	6.540	9043350065400	
ER16	7	6.5 to 7	13	4	7.016	9043350070160	
ER20	7	6.5 to 7	16	4	7.020	9043350070200	
ER25	7	6.5 to 7	21	4	7.025	9043350070250	
ER32	7	6.5 to 7	27	4	7.032	9043350070320	
ER40	7	6.5 to 7	33.5	4	7.040	9043350070400	



Series no. **4335**

nominal size	d ₁ mm	Sealing Range	d ₂ mm	B mm	Code no.	EDP Number
ER16	7.5	7 to 7.5	13	4	7.516	9043350075160
ER20	7.5	7 to 7.5	16	4	7.520	9043350075200
ER25	7.5	7 to 7.5	21	4	7.525	9043350075250
ER32	7.5	7 to 7.5	27	4	7.532	9043350075320
ER40	7.5	7 to 7.5	33.5	4	7.540	9043350075400
ER16	8	7.5 to 8	13	4	8.016	9043350080160
ER20	8	7.5 to 8	16	4	8.020	9043350080200
ER25	8	7.5 to 8	21	4	8.025	9043350080250
ER32	8	7.5 to 8	27	4	8.032	9043350080320
ER40	8	7.5 to 8	33.5	4	8.040	9043350080400
ER16	8.5	8 to 8.5	13	4	8.516	9043350085160
ER20	8.5	8 to 8.5	16	4	8.520	9043350085200
ER25	8.5	8 to 8.5	21	4	8.525	9043350085250
ER32	8.5	8 to 8.5	27	4	8.532	9043350085320
ER40	8.5	8 to 8.5	33.5	4	8.540	9043350085400
ER16	9	8.5 to 9	13	4	9.016	9043350090160
ER20	9	8.5 to 9	16	4	9.020	9043350090200
ER25	9	8.5 to 9	21	4	9.025	9043350090250
ER32	9	8.5 to 9	27	4	9.032	9043350090320
ER40	9	8.5 to 9	33.5	4	9.040	9043350090400
ER16	9.5	9 to 9.5	13	4	9.516	9043350095160
ER20	9.5	9 to 9.5	16	4	9.520	9043350095200
ER25	9.5	9 to 9.5	21	4	9.525	9043350095250
ER32	9.5	9 to 9.5	27	4	9.532	9043350095320
ER40	9.5	9 to 9.5	33.5	4	9.540	9043350095400
ER16	10	9.5 to 10	13	4	10.016	9043350100160
ER20	10	9.5 to 10	16	4	10.020	9043350100200
ER25	10	9.5 to 10	21	4	10.025	9043350100250
ER32	10	9.5 to 10	27	4	10.032	9043350100320
ER40	10	9.5 to 10	33.5	4	10.040	9043350100400
ER20	10.5	10 to 10.5	16	4	10.520	9043350105200
ER25	10.5	10 to 10.5	21	4	10.525	9043350105250
ER32	10.5	10 to 10.5	27	4	10.532	9043350105320
ER40	10.5	10 to 10.5	33.5	4	10.540	9043350105400
ER20	11	10.5 to 11	16	4	11.020	9043350110200
ER25	11	10.5 to 11	21	4	11.025	9043350110250
ER32	11	10.5 to 11	27	4	11.032	9043350110320
ER40	11	10.5 to 11	33.5	4	11.040	9043350110400
ER20	11.5	11 to 11.5	16	4	11.520	9043350115200
ER25	11.5	11 to 11.5	21	4	11.525	9043350115250
ER32	11.5	11 to 11.5	27	4	11.532	9043350115320
ER40	11.5	11 to 11.5	33.5	4	11.540	9043350115400
ER20	12	11.5 to 12	16	4	12.020	9043350120200
ER25	12	11.5 to 12	21	4	12.025	9043350120250
ER32	12	11.5 to 12	27	4	12.032	9043350120320
ER40	12	11.5 to 12	33.5	4	12.040	9043350120400
ER20	12.5	12 to 12.5	16	4	12.520	9043350125200
ER25	12.5	12 to 12.5	21	4	12.525	9043350125250
ER32	12.5	12 to 12.5	27	4	12.532	9043350125320
ER40	12.5	12 to 12.5	33.5	4	12.540	9043350125400

					Series no.	4335
nominal size	d ₁ mm	Sealing Range	d ₂ mm	B mm	Code no.	EDP Number
ER20	13	12.5 to 13	16	4	13.020	9043350130200
ER25	13	12.5 to 13	21	4	13.025	9043350130250
ER32	13	12.5 to 13	27	4	13.032	9043350130320
ER40	13	12.5 to 13	33.5	4	13.040	9043350130400
ER25	13.5	13 to 13.5	21	4	13.525	9043350135250
ER32	13.5	13 to 13.5	27	4	13.532	9043350135320
ER40	13.5	13 to 13.5	33.5	4	13.540	9043350135400
ER25	14	13.5 to 14	21	4	14.025	9043350140250
ER32	14	13.5 to 14	27	4	14.032	9043350140320
ER40	14	13.5 to 14	33.5	4	14.040	9043350140400
ER25	14.5	14 to 14.5	21	4	14.525	9043350145250
ER32	14.5	14 to 14.5	27	4	14.532	9043350145320
ER40	14.5	14 to 14.5	33.5	4	14.540	9043350145400
ER25	15	14.5 to 15	21	4	15.025	9043350150250
ER32	15	14.5 to 15	27	4	15.032	9043350150320
ER40	15	14.5 to 15	33.5	4	15.040	9043350150400
ER25	15.5	15 to 15.5	21	4	15.525	9043350155250
ER32	15.5	15 to 15.5	27	4	15.532	9043350155320
ER40	15.5	15 to 15.5	33.5	4	15.540	9043350155400
ER25	16	15.5 to 16	21	4	16.025	9043350160250
ER32	16	15.5 to 16	27	4	16.032	9043350160320
ER40	16	15.5 to 16	33.5	4	16.040	9043350160400
ER32	16.5	16 to 16.5	27	4	16.532	9043350165320
ER40	16.5	16 to 16.5	33.5	4	16.540	9043350165400
ER32	17	16.5 to 17	27	4	17.032	9043350170320
ER40	17	16.5 to 17	33.5	4	17.040	9043350170400
ER32	17.5	17 to 17.5	27	4	17.532	9043350175320
ER40	17.5	17 to 17.5	33.5	4	17.540	9043350175400
ER32	18	17.5 to 18	27	4	18.032	9043350180320
ER40	18	17.5 to 18	33.5	4	18.040	9043350180400
ER32	18.5	18 to 18.5	27	4	18.532	9043350185320
ER40	18.5	18 to 18.5	33.5	4	18.540	9043350185400
ER32	19	18.5 to 19	27	4	19.032	9043350190320
ER40	19	18.5 to 19	33.5	4	19.040	9043350190400
ER32	19.5	19 to 19.5	27	4	19.532	9043350195320
ER40	19.5	19 to 19.5	33.5	4	19.540	9043350195400
ER32	20	19.5 to 20	27	4	20.032	9043350200320
ER40	20	19.5 to 20	33.5	4	20.040	9043350200400
ER40	20.5	20 to 20.5	33.5	4	20.540	9043350205400
ER40	21	20.5 to 21	33.5	4	21.040	9043350210400
ER40	21.5	21 to 21.5	33.5	4	21.540	9043350215400
ER40	22	21.5 to 22	33.5	4	22.040	9043350220400
ER40	22.5	22 to 22.5	33.5	4	22.540	9043350225400
ER40	23	22.5 to 23	33.5	4	23.040	9043350230400
ER40	23.5	23 to 23.5	33.5	4	23.540	9043350235400
ER40	24	23.5 to 24	33.5	4	24.040	9043350240400
ER40	24.5	24 to 24.5	33.5	4	24.540	9043350245400
ER40	25	24.5 to 25	33.5	4	25.040	9043350250400
ER40	25.5	25 to 25.5	33.5	4	25.540	9043350255400
ER40	26	25.5 to 26	33.5	4	26.040	9043350260400

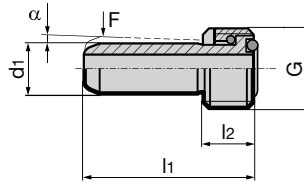
Coolant supply sets for conventional cooling

Product information

- leak-proof screwed connection tested to 80 bar
- to DIN 69895
- F = angle movability $\pm 1^\circ$
- for HSK-A and HSK-E shanks

Scope of delivery

- incl. union nut and O-rings



Series no.

4949

for HSK-A	d ₁ mm	α°	F	G	l ₁ mm	l ₂ mm	EDP Number
32	6	1.2	5N	M10x1.0	26.0	5.5	9049490100320
40	8	1.4	5N	M12x1.0	29.5	7.5	9049490120400
50	10	1.3	6N	M16x1.0	33.0	9.5	9049490160500
63	12	1.3	6N	M18x1.0	36.5	11.5	9049490180630
80	14	1.4	7N	M20x1.5	40.0	13.5	9049490200800
100	16	1.4	7N	M24x1.5	44.0	15.5	9049490241000

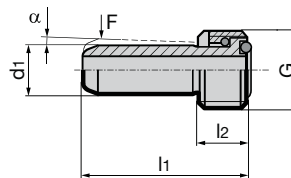
Coolant supply sets for conventional cooling with filter

Product information

- leak-proof screwed connection tested to 80 bar
- similar DIN 69895
- with filter for contamination-free cooling
- protects against tool breakage and eases error analysis
- F = angle movability $\pm 1^\circ$
- for HSK-A and HSK-E shanks

Scope of delivery

- incl. union nut and O-rings
- 100µ stainless steel fabric filter



Series no.

4979

for HSK-A	d ₁ mm	α°	F	G	l ₁ mm	l ₂ mm	EDP Number
32	6	1.2	5N	M10x1	26.0	5.5	9049790100320
40	8	1.4	5N	M12x1	29.5	7.5	9049790120400
50	10	1.3	6N	M16x1	33.0	9.5	9049790160500
63	12	1.3	6N	M18x1	36.5	11.5	9049790180630
80	14	1.4	7N	M20x1.5	40.0	13.5	9049790200800
100	16	1.4	7N	M24x1.5	44.0	15.5	9049790241000

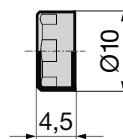
Data coding chip

Product information

- Identification systems BIS C
- for installation space to DIN 69 873
- data carrier read/write
- 511 bytes
- operating temperature 0...+70
- protection class to IEC
- product data exchange acc. to DIN 4000
- glued in bore Ø10 H11

Scope of delivery

- data coding chip
- installation in chuck and additional balancing can be ordered separately



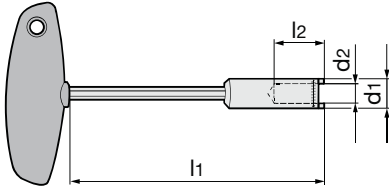
Series no.

4955

coding chip BIS C-122-04/L	EDP Number
10 x 4.5	9049550100000

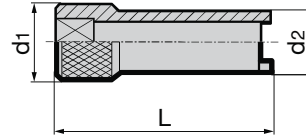
Product information

- with T-handle
- for coolant supply sets for conventional cooling and MQL coolant supply unit



Product information

- suitable for torque wrench
Series no. 4915, drive 3/8"
- for coolant supply sets



Series no. 4911

for HSK	d1 mm	d2 mm	l1 mm	l2 mm	EDP Number
32	11,0	6,1	128	23,0	9049110240000
40	13,0	8,1	134	26,0	9049110300000
50	15,0	10,1	134	28,0	9049110380000
63	17,0	12,1	135	31,5	9049110480000
80	20,0	14,1	138	32,0	9049110600000
100	22,5	16,1	138	35,0	9049110750000

Series no. 4910

for HSK	MA Nm	d1 mm	d2 mm	L mm	EDP Number
32	7	20	14	60	9049100240000
40	11	20	16	60	9049100300000
50	15	20	18	60	9049100380000
63	20	20	18	60	9049100480000
80	25	20	20	75	9049100600000
100	30	22	22	80	9049100750000

Installation of coolant supply sets 4949/4979

1. The HSK holder must be clean, free of swarf and undamaged.
2. Grease the O-rings prior to assembly.
3. Centrally insert the complete coolant supply set (coolant pipe, union nut and 2 O-rings) in the HSK with the assistance of the socket spanner.
4. Screw in the coolant supply set/coolant supply unit and tighten (see table for torque figures)
5. Check coolant pipe for radial mobility.

Torque figures

for HSK	MA Nm
32	7
40	11
50	15
63	20
80	25
100	30

