

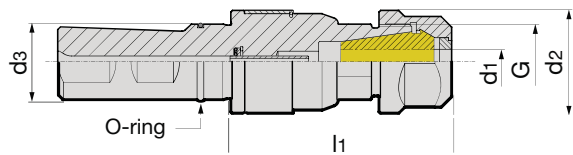
Synchro tapping chucks with straight shank

Product information

- compensate synchronisation errors
- minimal length compensation $\pm 0,15$ mm in tension and compression direction balances very small pitch differences between synchro spindle and tap, which can cause high frictional forces on the thread flanks
- length-setting screw allows 2 to 3 mm readjustment
- suitable for internal cooling
- max. coolant pressure up to 50 bar
- combination shank similar to DIN 1835 for side lock holders

Scope of delivery

- incl. sealed IC/ER clamping nut
Series no. 4306 (*see torque)
- incl. adjustment key for adjustment screws
- order adjustment screws „plan“
Series no. 4364, tapping collet,
Series no. 4308, sealing washer,
Series no. 4335 and clamping key,
Series no. 4913 separately



										Series no.	4326
d_3 ~DIN 1835 mm	nom. size	for thread	d_1 mm	d_2 mm	l_1 mm	torque* Nm	G	kg	Code no.	EDP Number	
25	ER20	M4-M14	4-11.0	34	73	35	M25x1.5	0.50	20.025	9043260200250	
25	ER32	M4-M30	4-20.0	50	87.5	136	M40x1.5	1.30	32.025	9043260320250	

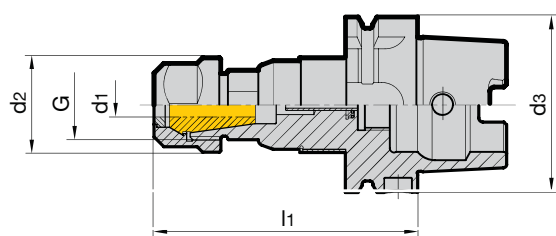
HSK-A synchro tapping chucks

Product information

- compensate synchronisation errors
- guarantee high thread quality and optimal tool life with conventional taps
- minimal length compensation $\pm 0,15$ mm in tension and compression direction between synchronous spindle and tap reduces excessive thread flank friction
- reduces a possible increase in axial forces during the cutting cycle to a minimum
- length-setting screw allows 2 to 3 mm readjustment
- suitable for internal cooling
- max. coolant pressure up to 50 bar
- HSK-A to ISO 12164-1/DIN 69893-1

Scope of delivery

- incl. sealed IC/ER clamping nut
Series no. 4306 (*see torque)
- incl. adjustment key for adjustment screws
- order adjustment screws „plan“
Series no. 4364, tapping collet,
Series no. 4308, sealing washer,
Series no. 4325 and clamping key,
Series no. 4913 separately
- for conventional cooling order coolant supply set
Series no. 4949 separately

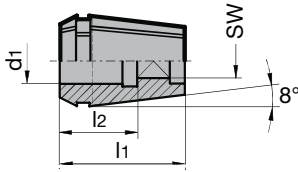


										Series no.	4327
d_3 ~DIN 1835 mm	nom. size	for thread	d_1 mm	d_2 mm	l_1 mm	torque* Nm	G	kg	Code no.	EDP Number	
63	ER20	M4-M14	4.5-11.2	34	95.5	35	M25x1.5	1.00	20.063	9043270200630	
63	ER20	M4-M14	4.5-11.2	34	160.0	35	M25x1.5	1.50	20.163	9043270201630	
63	ER32	M4-M30	4.5-18.0	50	109.0	136	M40x1.5	1.70	32.063	9043270320630	
100	ER20	M4-M14	4.5-11.2	34	102.0	35	M25x1.5	2.50	20.100	9043270201000	
100	ER32	M4-M30	4.5-18.0	50	115.5	136	M40x1.5	2.70	32.100	9043270321000	

Product information

- for clamping taps with square shank in synchro tapping chucks or collet holders
- smaller Ø4mm are clamped with collet, Series no. 4307 without sq. drive
- tightening torque see clamping nuts Series no. 4306

Clamping range:
 ER16: Ø 4.5 - Ø 8.0
 ER20: Ø 4.0 - Ø 11.0
 ER25: Ø 4.5 - Ø 12.0
 ER32: Ø 4.0 - Ø 20.0
 ER40: Ø 7.0 - Ø 22.0



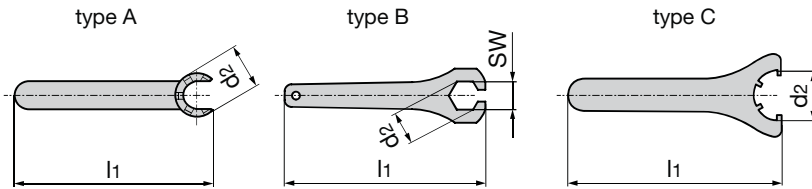
Series no. **4308**

nominal size	for shank Ø d ₁ mm	square SW	l ₁ mm	l ₂ mm	Code no.	EDP Number
ER16	4.5	3.4	27.5	15	4.516	9043080045160
ER16	5.5	4.3	27.5	18	5.516	9043080055160
ER16	6.0	4.9	27.5	18	6.016	9043080060160
ER16	7.0	5.5	27.5	18	7.016	9043080070160
ER16	8.0	6.2/6.3	27.5	22	8.016	9043080080160
ER20	4.0	3.2	31.5	15	4.020	9043080040200
ER20	4.5	3.4	31.5	15	4.520	9043080045200
ER20	5.5	4.3	31.5	18	5.520	9043080055200
ER20	6.0	4.9	31.5	18	6.020	9043080060200
ER20	7.0	5.5	31.5	18	7.020	9043080070200
ER20	8.0	6.2/6.3	31.5	22	8.020	9043080080200
ER20	9.0	7.0/7.1	31.5	22	9.020	9043080090200
ER20	10.0	8.0	31.5	25	10.020	9043080100200
ER20	11.0	9.0	31.5	25	11.020	9043080110200
ER25	4.5	3.4	34.0	15	4.525	9043080045250
ER25	5.5	4.3	34.0	18	5.525	9043080055250
ER25	6.0	4.9	34.0	18	6.025	9043080060250
ER25	7.0	5.5	34.0	18	7.025	9043080070250
ER25	8.0	6.2/6.3	34.0	22	8.025	9043080080250
ER25	9.0	7.0/7.1	34.0	22	9.025	9043080090250
ER25	10.0	8.0	34.0	25	10.025	9043080100250
ER25	11.0	9.0	34.0	25	11.025	9043080110250
ER25	12.0	9.0	34.0	25	12.025	9043080120250
ER32	4.0	3.15/3.2	40.0	15	4.032	9043080040320
ER32	4.5	3.4	40.0	15	4.532	9043080045320
ER32	5.5	4.3	40.0	18	5.532	9043080055320
ER32	6.0	4.9	40.0	18	6.032	9043080060320
ER32	7.0	5.5	40.0	18	7.032	9043080070320
ER32	8.0	6.2/6.3	40.0	22	8.032	9043080080320
ER32	9.0	7.0/7.1	40.0	22	9.032	9043080090320
ER32	10.0	8.0	40.0	25	10.032	9043080100320
ER32	11.0	9.0	40.0	25	11.032	9043080110320
ER32	12.0	9.0	40.0	25	12.032	9043080120320
ER32	14.0	11.0/11.2	40.0	25	14.032	9043080140320
ER32	16.0	12.0/12.5	40.0	25	16.032	9043080160320
ER32	18.0	14.5	40.0	25	18.032	9043080180320
ER32	20.0	16.0	40.0	28	20.032	9043080200320
ER40	7.0	5.5	46.0	18	7.040	9043080070400
ER40	8.0	6.2/6.3	46.0	22	8.040	9043080080400
ER40	9.0	7.0/7.1	46.0	22	9.040	9043080090400
ER40	10.0	8.0	46.0	25	10.040	9043080100400
ER40	11.0	9.0	46.0	25	11.040	9043080110400
ER40	12.0	9.0	46.0	25	12.040	9043080120400
ER40	14.0	11.0/11.2	46.0	25	14.040	9043080140400
ER40	16.0	12.0/12.5	46.0	25	16.040	9043080160400
ER40	18.0	14.5	46.0	25	18.040	9043080180400
ER40	20.0	16.0	46.0	28	20.040	9043080200400
ER40	22.0	18.0	46.0	28	22.040	9043080220400

					Series no.	4335
nominal size	d ₁ mm	Sealing Range	d ₂ mm	B mm	Code no.	EDP Number
ER20	13	12.5 to 13	16	4	13.020	9043350130200
ER25	13	12.5 to 13	21	4	13.025	9043350130250
ER32	13	12.5 to 13	27	4	13.032	9043350130320
ER40	13	12.5 to 13	33.5	4	13.040	9043350130400
ER25	13.5	13 to 13.5	21	4	13.525	9043350135250
ER32	13.5	13 to 13.5	27	4	13.532	9043350135320
ER40	13.5	13 to 13.5	33.5	4	13.540	9043350135400
ER25	14	13.5 to 14	21	4	14.025	9043350140250
ER32	14	13.5 to 14	27	4	14.032	9043350140320
ER40	14	13.5 to 14	33.5	4	14.040	9043350140400
ER25	14.5	14 to 14.5	21	4	14.525	9043350145250
ER32	14.5	14 to 14.5	27	4	14.532	9043350145320
ER40	14.5	14 to 14.5	33.5	4	14.540	9043350145400
ER25	15	14.5 to 15	21	4	15.025	9043350150250
ER32	15	14.5 to 15	27	4	15.032	9043350150320
ER40	15	14.5 to 15	33.5	4	15.040	9043350150400
ER25	15.5	15 to 15.5	21	4	15.525	9043350155250
ER32	15.5	15 to 15.5	27	4	15.532	9043350155320
ER40	15.5	15 to 15.5	33.5	4	15.540	9043350155400
ER25	16	15.5 to 16	21	4	16.025	9043350160250
ER32	16	15.5 to 16	27	4	16.032	9043350160320
ER40	16	15.5 to 16	33.5	4	16.040	9043350160400
ER32	16.5	16 to 16.5	27	4	16.532	9043350165320
ER40	16.5	16 to 16.5	33.5	4	16.540	9043350165400
ER32	17	16.5 to 17	27	4	17.032	9043350170320
ER40	17	16.5 to 17	33.5	4	17.040	9043350170400
ER32	17.5	17 to 17.5	27	4	17.532	9043350175320
ER40	17.5	17 to 17.5	33.5	4	17.540	9043350175400
ER32	18	17.5 to 18	27	4	18.032	9043350180320
ER40	18	17.5 to 18	33.5	4	18.040	9043350180400
ER32	18.5	18 to 18.5	27	4	18.532	9043350185320
ER40	18.5	18 to 18.5	33.5	4	18.540	9043350185400
ER32	19	18.5 to 19	27	4	19.032	9043350190320
ER40	19	18.5 to 19	33.5	4	19.040	9043350190400
ER32	19.5	19 to 19.5	27	4	19.532	9043350195320
ER40	19.5	19 to 19.5	33.5	4	19.540	9043350195400
ER32	20	19.5 to 20	27	4	20.032	9043350200320
ER40	20	19.5 to 20	33.5	4	20.040	9043350200400
ER40	20.5	20 to 20.5	33.5	4	20.540	9043350205400
ER40	21	20.5 to 21	33.5	4	21.040	9043350210400
ER40	21.5	21 to 21.5	33.5	4	21.540	9043350215400
ER40	22	21.5 to 22	33.5	4	22.040	9043350220400
ER40	22.5	22 to 22.5	33.5	4	22.540	9043350225400
ER40	23	22.5 to 23	33.5	4	23.040	9043350230400
ER40	23.5	23 to 23.5	33.5	4	23.540	9043350235400
ER40	24	23.5 to 24	33.5	4	24.040	9043350240400
ER40	24.5	24 to 24.5	33.5	4	24.540	9043350245400
ER40	25	24.5 to 25	33.5	4	25.040	9043350250400
ER40	25.5	25 to 25.5	33.5	4	25.540	9043350255400
ER40	26	25.5 to 26	33.5	4	26.040	9043350260400

Product information

- for clamping nuts
- Type A with special hook key for clamping nuts
System DIN 6499 mini design
- Type B for clamping nuts with hexagonal design
- Type C for clamping nuts for external slots



Series no.

4913

nom. size mm	type	l ₁ mm	for ER d ₂ mm	SW	EDP Number
ER16 mini	A	122	22	-	9049130162000
ER20 mini	A	139	28	-	9049130202000
ER25 mini	A	143	35	-	9049130252000
ER11	B	141	19	17	9049130110000
ER16	B	178	28	25	9049130160000
ER16	C	161	32	-	9049130160320
ER20	B	200	34	30	9049130200000
ER20	C	183	35	-	9049130201000
ER25	C	210	42	-	9049130250000
ER32	C	250	50	-	9049130320000
ER40	C	290	63	-	9049130400000

Tool holders

Configuration of synchro tapping chucks for conventional cooling



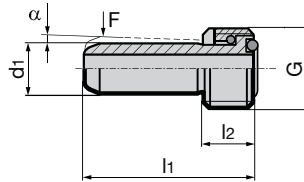
Coolant supply sets for conventional cooling

Product information

- leak-proof screwed connection tested to 80 bar
- to DIN 69895
- F = angle movability $\pm 1^\circ$
- for HSK-A and HSK-E shanks

Scope of delivery

- incl. union nut and O-rings



Series no.

4949

for HSK-A	d ₁ mm	α°	F	G	l ₁ mm	l ₂ mm	EDP Number
32	6	1.2	5N	M10x1.0	26.0	5.5	9049490100320
40	8	1.4	5N	M12x1.0	29.5	7.5	9049490120400
50	10	1.3	6N	M16x1.0	33.0	9.5	9049490160500
63	12	1.3	6N	M18x1.0	36.5	11.5	9049490180630
80	14	1.4	7N	M20x1.5	40.0	13.5	9049490200800
100	16	1.4	7N	M24x1.5	44.0	15.5	9049490241000

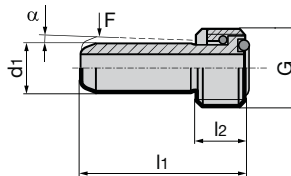
Coolant supply sets for conventional cooling with filter

Product information

- leak-proof screwed connection tested to 80 bar
- similar DIN 69895
- with filter for contamination-free cooling
- protects against tool breakage and eases error analysis
- F = angle movability $\pm 1^\circ$
- for HSK-A and HSK-E shanks

Scope of delivery

- incl. union nut and O-rings
- 100µ stainless steel fabric filter



Series no.

4979

for HSK-A	d ₁ mm	α°	F	G	l ₁ mm	l ₂ mm	EDP Number
32	6	1.2	5N	M10x1	26.0	5.5	9049790100320
40	8	1.4	5N	M12x1	29.5	7.5	9049790120400
50	10	1.3	6N	M16x1	33.0	9.5	9049790160500
63	12	1.3	6N	M18x1	36.5	11.5	9049790180630
80	14	1.4	7N	M20x1.5	40.0	13.5	9049790200800
100	16	1.4	7N	M24x1.5	44.0	15.5	9049790241000

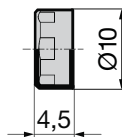
Data coding chip

Product information

- Identification systems BIS C
- for installation space to DIN 69 873
- data carrier read/write
- 511 bytes
- operating temperature 0...+70
- protection class to IEC
- product data exchange acc. to DIN 4000
- glued in bore Ø10 H11

Scope of delivery

- data coding chip
- installation in chuck and additional balancing can be ordered separately



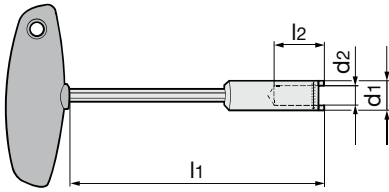
Series no.

4955

coding chip BIS C-122-04/L	EDP Number
10 x 4.5	9049550100000

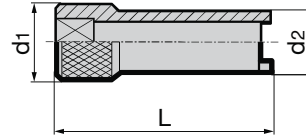
Product information

- with T-handle
- for coolant supply sets for conventional cooling and MQL coolant supply unit



Product information

- suitable for torque wrench
Series no. 4915, drive 3/8"
- for coolant supply sets



Series no. 4911

for HSK	d1 mm	d2 mm	l1 mm	l2 mm	EDP Number
32	11,0	6,1	128	23,0	9049110240000
40	13,0	8,1	134	26,0	9049110300000
50	15,0	10,1	134	28,0	9049110380000
63	17,0	12,1	135	31,5	9049110480000
80	20,0	14,1	138	32,0	9049110600000
100	22,5	16,1	138	35,0	9049110750000

Series no. 4910

for HSK	MA Nm	d1 mm	d2 mm	L mm	EDP Number
32	7	20	14	60	9049100240000
40	11	20	16	60	9049100300000
50	15	20	18	60	9049100380000
63	20	20	18	60	9049100480000
80	25	20	20	75	9049100600000
100	30	22	22	80	9049100750000

Installation of coolant supply sets 4949/4979

1. The HSK holder must be clean, free of swarf and undamaged.
2. Grease the O-rings prior to assembly.
3. Centrally insert the complete coolant supply set (coolant pipe, union nut and 2 O-rings) in the HSK with the assistance of the socket spanner.
4. Screw in the coolant supply set/coolant supply unit and tighten (see table for torque figures)
5. Check coolant pipe for radial mobility.

Torque figures

for HSK	MA Nm
32	7
40	11
50	15
63	20
80	25
100	30

