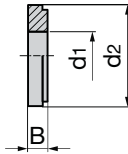


## Product information

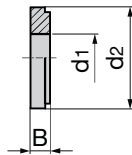
- the application range of sealing washer, article no. 4325, is from nom.-Ø d1 to the next dimension below, i.e. for Ø 6.3 mm (nom. size ER20) order sealing washer d1 = 6.5 mm (Order no. 6.520).
- suitable for up to 150 bar coolant pressure

## Ordering example

Ø d1 = 3.5  
 nom. size = ER 20  
 article no./Order no. = 4335 3.520



						Series no.	4335
nominal size	d1 mm	Sealing Range	d2 mm	B mm	Code no.	EDP Number	
ER16	3	2.5 to 3	13	4	3.016	9043350030160	
ER20	3	2.5 to 3	16	4	3.020	9043350030200	
ER25	3	2.5 to 3	21	4	3.025	9043350030250	
ER32	3	2.5 to 3	27	4	3.032	9043350030320	
ER16	3.5	3 to 3.5	13	4	3.516	9043350035160	
ER20	3.5	3 to 3.5	16	4	3.520	9043350035200	
ER25	3.5	3 to 3.5	21	4	3.525	9043350035250	
ER32	3.5	3 to 3.5	27	4	3.532	9043350035320	
ER40	3.5	3 to 3.5	33.5	4	3.540	9043350035400	
ER16	4	3.5 to 4	13	4	4.016	9043350040160	
ER20	4	3.5 to 4	16	4	4.020	9043350040200	
ER25	4	3.5 to 4	21	4	4.025	9043350040250	
ER32	4	3.5 to 4	27	4	4.032	9043350040320	
ER40	4	3.5 to 4	33.5	4	4.040	9043350040400	
ER16	4.5	4 to 4.5	13	4	4.516	9043350045160	
ER20	4.5	4 to 4.5	16	4	4.520	9043350045200	
ER25	4.5	4 to 4.5	21	4	4.525	9043350045250	
ER32	4.5	4 to 4.5	27	4	4.532	9043350045320	
ER40	4.5	4 to 4.5	33.5	4	4.540	9043350045400	
ER16	5	4.5 to 5	13	4	5.016	9043350050160	
ER20	5	4.5 to 5	16	4	5.020	9043350050200	
ER25	5	4.5 to 5	21	4	5.025	9043350050250	
ER32	5	4.5 to 5	27	4	5.032	9043350050320	
ER40	5	4.5 to 5	33.5	4	5.040	9043350050400	
ER16	5.5	5 to 5.5	13	4	5.516	9043350055160	
ER20	5.5	5 to 5.5	16	4	5.520	9043350055200	
ER25	5.5	5 to 5.5	21	4	5.525	9043350055250	
ER32	5.5	5 to 5.5	27	4	5.532	9043350055320	
ER40	5.5	5 to 5.5	33.5	4	5.540	9043350055400	
ER16	6	5.5 to 6	13	4	6.016	9043350060160	
ER20	6	5.5 to 6	16	4	6.020	9043350060200	
ER25	6	5.5 to 6	21	4	6.025	9043350060250	
ER32	6	5.5 to 6	27	4	6.032	9043350060320	
ER40	6	5.5 to 6	33.5	4	6.040	9043350060400	
ER16	6.5	6 to 6.5	13	4	6.516	9043350065160	
ER20	6.5	6 to 6.5	16	4	6.520	9043350065200	
ER25	6.5	6 to 6.5	21	4	6.525	9043350065250	
ER32	6.5	6 to 6.5	27	4	6.532	9043350065320	
ER40	6.5	6 to 6.5	33.5	4	6.540	9043350065400	
ER16	7	6.5 to 7	13	4	7.016	9043350070160	
ER20	7	6.5 to 7	16	4	7.020	9043350070200	
ER25	7	6.5 to 7	21	4	7.025	9043350070250	
ER32	7	6.5 to 7	27	4	7.032	9043350070320	
ER40	7	6.5 to 7	33.5	4	7.040	9043350070400	



Series no. **4335**

nominal size	d <sub>1</sub> mm	Sealing Range	d <sub>2</sub> mm	B mm	Code no.	EDP Number
ER16	7.5	7 to 7.5	13	4	7.516	9043350075160
ER20	7.5	7 to 7.5	16	4	7.520	9043350075200
ER25	7.5	7 to 7.5	21	4	7.525	9043350075250
ER32	7.5	7 to 7.5	27	4	7.532	9043350075320
ER40	7.5	7 to 7.5	33.5	4	7.540	9043350075400
ER16	8	7.5 to 8	13	4	8.016	9043350080160
ER20	8	7.5 to 8	16	4	8.020	9043350080200
ER25	8	7.5 to 8	21	4	8.025	9043350080250
ER32	8	7.5 to 8	27	4	8.032	9043350080320
ER40	8	7.5 to 8	33.5	4	8.040	9043350080400
ER16	8.5	8 to 8.5	13	4	8.516	9043350085160
ER20	8.5	8 to 8.5	16	4	8.520	9043350085200
ER25	8.5	8 to 8.5	21	4	8.525	9043350085250
ER32	8.5	8 to 8.5	27	4	8.532	9043350085320
ER40	8.5	8 to 8.5	33.5	4	8.540	9043350085400
ER16	9	8.5 to 9	13	4	9.016	9043350090160
ER20	9	8.5 to 9	16	4	9.020	9043350090200
ER25	9	8.5 to 9	21	4	9.025	9043350090250
ER32	9	8.5 to 9	27	4	9.032	9043350090320
ER40	9	8.5 to 9	33.5	4	9.040	9043350090400
ER16	9.5	9 to 9.5	13	4	9.516	9043350095160
ER20	9.5	9 to 9.5	16	4	9.520	9043350095200
ER25	9.5	9 to 9.5	21	4	9.525	9043350095250
ER32	9.5	9 to 9.5	27	4	9.532	9043350095320
ER40	9.5	9 to 9.5	33.5	4	9.540	9043350095400
ER16	10	9.5 to 10	13	4	10.016	9043350100160
ER20	10	9.5 to 10	16	4	10.020	9043350100200
ER25	10	9.5 to 10	21	4	10.025	9043350100250
ER32	10	9.5 to 10	27	4	10.032	9043350100320
ER40	10	9.5 to 10	33.5	4	10.040	9043350100400
ER20	10.5	10 to 10.5	16	4	10.520	9043350105200
ER25	10.5	10 to 10.5	21	4	10.525	9043350105250
ER32	10.5	10 to 10.5	27	4	10.532	9043350105320
ER40	10.5	10 to 10.5	33.5	4	10.540	9043350105400
ER20	11	10.5 to 11	16	4	11.020	9043350110200
ER25	11	10.5 to 11	21	4	11.025	9043350110250
ER32	11	10.5 to 11	27	4	11.032	9043350110320
ER40	11	10.5 to 11	33.5	4	11.040	9043350110400
ER20	11.5	11 to 11.5	16	4	11.520	9043350115200
ER25	11.5	11 to 11.5	21	4	11.525	9043350115250
ER32	11.5	11 to 11.5	27	4	11.532	9043350115320
ER40	11.5	11 to 11.5	33.5	4	11.540	9043350115400
ER20	12	11.5 to 12	16	4	12.020	9043350120200
ER25	12	11.5 to 12	21	4	12.025	9043350120250
ER32	12	11.5 to 12	27	4	12.032	9043350120320
ER40	12	11.5 to 12	33.5	4	12.040	9043350120400
ER20	12.5	12 to 12.5	16	4	12.520	9043350125200
ER25	12.5	12 to 12.5	21	4	12.525	9043350125250
ER32	12.5	12 to 12.5	27	4	12.532	9043350125320
ER40	12.5	12 to 12.5	33.5	4	12.540	9043350125400

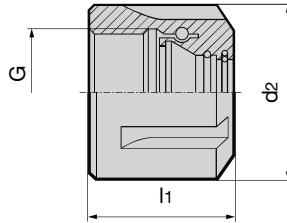
					Series no.	4335
nominal size	d <sub>1</sub> mm	Sealing Range	d <sub>2</sub> mm	B mm	Code no.	EDP Number
ER20	13	12.5 to 13	16	4	13.020	9043350130200
ER25	13	12.5 to 13	21	4	13.025	9043350130250
ER32	13	12.5 to 13	27	4	13.032	9043350130320
ER40	13	12.5 to 13	33.5	4	13.040	9043350130400
ER25	13.5	13 to 13.5	21	4	13.525	9043350135250
ER32	13.5	13 to 13.5	27	4	13.532	9043350135320
ER40	13.5	13 to 13.5	33.5	4	13.540	9043350135400
ER25	14	13.5 to 14	21	4	14.025	9043350140250
ER32	14	13.5 to 14	27	4	14.032	9043350140320
ER40	14	13.5 to 14	33.5	4	14.040	9043350140400
ER25	14.5	14 to 14.5	21	4	14.525	9043350145250
ER32	14.5	14 to 14.5	27	4	14.532	9043350145320
ER40	14.5	14 to 14.5	33.5	4	14.540	9043350145400
ER25	15	14.5 to 15	21	4	15.025	9043350150250
ER32	15	14.5 to 15	27	4	15.032	9043350150320
ER40	15	14.5 to 15	33.5	4	15.040	9043350150400
ER25	15.5	15 to 15.5	21	4	15.525	9043350155250
ER32	15.5	15 to 15.5	27	4	15.532	9043350155320
ER40	15.5	15 to 15.5	33.5	4	15.540	9043350155400
ER25	16	15.5 to 16	21	4	16.025	9043350160250
ER32	16	15.5 to 16	27	4	16.032	9043350160320
ER40	16	15.5 to 16	33.5	4	16.040	9043350160400
ER32	16.5	16 to 16.5	27	4	16.532	9043350165320
ER40	16.5	16 to 16.5	33.5	4	16.540	9043350165400
ER32	17	16.5 to 17	27	4	17.032	9043350170320
ER40	17	16.5 to 17	33.5	4	17.040	9043350170400
ER32	17.5	17 to 17.5	27	4	17.532	9043350175320
ER40	17.5	17 to 17.5	33.5	4	17.540	9043350175400
ER32	18	17.5 to 18	27	4	18.032	9043350180320
ER40	18	17.5 to 18	33.5	4	18.040	9043350180400
ER32	18.5	18 to 18.5	27	4	18.532	9043350185320
ER40	18.5	18 to 18.5	33.5	4	18.540	9043350185400
ER32	19	18.5 to 19	27	4	19.032	9043350190320
ER40	19	18.5 to 19	33.5	4	19.040	9043350190400
ER32	19.5	19 to 19.5	27	4	19.532	9043350195320
ER40	19.5	19 to 19.5	33.5	4	19.540	9043350195400
ER32	20	19.5 to 20	27	4	20.032	9043350200320
ER40	20	19.5 to 20	33.5	4	20.040	9043350200400
ER40	20.5	20 to 20.5	33.5	4	20.540	9043350205400
ER40	21	20.5 to 21	33.5	4	21.040	9043350210400
ER40	21.5	21 to 21.5	33.5	4	21.540	9043350215400
ER40	22	21.5 to 22	33.5	4	22.040	9043350220400
ER40	22.5	22 to 22.5	33.5	4	22.540	9043350225400
ER40	23	22.5 to 23	33.5	4	23.040	9043350230400
ER40	23.5	23 to 23.5	33.5	4	23.540	9043350235400
ER40	24	23.5 to 24	33.5	4	24.040	9043350240400
ER40	24.5	24 to 24.5	33.5	4	24.540	9043350245400
ER40	25	24.5 to 25	33.5	4	25.040	9043350250400
ER40	25.5	25 to 25.5	33.5	4	25.540	9043350255400
ER40	26	25.5 to 26	33.5	4	26.040	9043350260400

**Product information**

- for collets DIN ISO 15488
- for application with internal cooling  
IC/ER for sealing washer
- for increased clamping version ER  
or IC/ER with glide ring
- suitable for up to 150 bar coolant pressure

**Scope of delivery**

- version for internal cooling IC/ER:  
order sealing washer article no. 4335  
separately
- IC/ER versions for internal cooling



**Series no.** 4306

for sealing washer no. 4335	with glide ring	nom. size	d2 mm	l1 mm	G	max. torque Nm	EDP Number
–	–	ER16 mini	22	18.0	M19x1.0	55	9043060162000
–	–	ER20 mini	28	19.0	M24x1.0	75	9043060202000
–	–	ER25 mini	35	20.0	M30x1.0	100	9043060252000
–	–	ER11	19	11.3	M14x0.75	25	9043060110000
–	–	ER16	28	17.5	M22x1.5	55	9043060160000
–	–	ER20	34	19.0	M25x1.5	75	9043060200000
–	–	ER25	42	20.0	M32x1.5	100	9043060250000
–	–	ER32	50	22.5	M40x1.5	140	9043060320000
–	–	ER40	63	25.5	M50x1.5	200	9043060400000
x	–	IC/ER16 mini	22	22.0	M19x1.0	55	9043060163000
x	–	IC/ER20 mini	28	24.0	M24x1.0	75	9043060203000
x	–	IC/ER25 mini	35	25.0	M30x1.0	100	9043060253000
x	–	IC/ER16	28	22.5	M22x1.5	55	9043060166000
x	–	IC/ER20	34	24.0	M25x1.5	75	9043060206000
x	–	IC/ER25	42	25.0	M32x1.5	100	9043060256000
x	–	IC/ER32	50	27.5	M40x1.5	140	9043060326000
x	–	IC/ER40	63	30.5	M50x1.5	200	9043060406000
–	x	ER16	28	20.3	M22x1.5	55	9043060164000
–	x	ER20	34	21.8	M25x1.5	75	9043060204000
–	x	ER25	42	22.4	M32x1.5	100	9043060254000
–	x	ER32	50	25.0	M40x1.5	140	9043060324000
–	x	ER40	63	28.3	M50x1.5	200	9043060404000
x	x	IC/ER16	28	22.7	M22x1.5	55	9043060165000
x	x	IC/ER20	34	24.2	M25x1.5	75	9043060205000
x	x	IC/ER25	42	25.2	M32x1.5	100	9043060255000
x	x	IC/ER32	50	27.4	M40x1.5	140	9043060325000
x	x	IC/ER40	63	30.7	M50x1.5	200	9043060405000

Tool Holders