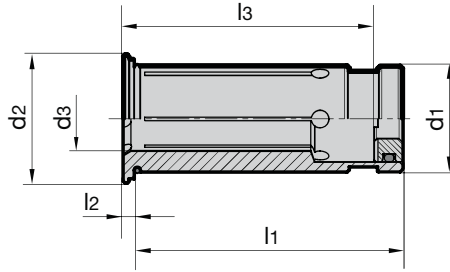


Product information

- for clamping smaller shank-Ø in hydraulic chucks
- clamping-Ø for tool shank tolerance h6
- concentricity $\leq 2 \mu\text{m}$
- with adjustable limit stop
- the application of reduction sleeves makes it possible to increase the permissible transferable torque by approx. 25% in comparison to direct clamping

Scope of delivery

- incl. stop element



Series no. 4368

d ₁ inch/mm	for shank Ø d ₃ h ₆ inch/mm	d ₂ mm	l ₁ mm	l ₂ mm	l ₃ mm	Code no.	EDP Number
1/2	1/8	16.5	45	2	26.5	3.013	9043680030130
1/2	3/16	16.5	45	2	26.5	4.013	9043680040130
1/2	1/4	16.5	45	2	26.5	6.013	9043680060130
1/2	5/16	16.5	45	2	26.5	8.013	9043680080130
1/2	3/8	16.5	45	2	26.5	9.013	9043680090130
1/2	3/8	16.5	45	2	26.5	103.013	9043681030130
1/2	4	16.5	45	2	26.5	104.013	9043681040130
1/2	5	16.5	45	2	26.5	105.013	9043681050130
1/2	6	16.5	45	2	26.5	106.013	9043681060130
1/2	8	16.5	45	2	34.5	108.013	9043681080130
3/4	1/8	24	50.5	2	28.5	3.019	9043680030190
3/4	3/16	24	50.5	2	28.5	4.019	9043680040190
3/4	1/4	24	50.5	2	37.5	6.019	9043680060190
3/4	5/16	24	50.5	2	37.5	8.019	9043680080190
3/4	3/8	24	50.5	2	42.5	9.019	9043680090190
3/4	7/16	24	50.5	2	47.5	11.019	9043680110190
3/4	1/2	24	50.5	2	47.5	13.019	9043680130190
3/4	9/16	24	50.5	2	47.5	14.019	9043680140190
3/4	5/8	24	50.5	2	47.5	15.019	9043680150190
3/4	3	24	50.5	2	28.5	103.019	9043681030190
3/4	4	24	50.5	2	28.5	104.019	9043681040190
3/4	5	24	50.5	2	28.5	105.019	9043681050190
3/4	6	24	50.5	2	37.5	106.019	9043681060190
3/4	8	24	50.5	2	37.5	108.019	9043681080190
3/4	10	24	50.5	2	42.5	110.019	9043681100190
3/4	12	24	50.5	2	47.5	112.019	9043681120190
3/4	14	24	50.5	2	47.5	114.019	9043681140190
1 1/4	1/4	35.5	60.5	2	37.5	6.031	9043680060310
1 1/4	5/16	35.5	60.5	2	37.5	8.031	9043680080310
1 1/4	3/8	35.5	60.5	2	37.5	9.031	9043680090310
1 1/4	7/16	35.5	60.5	2	40.5	11.031	9043680110310
1 1/4	1/2	35.5	60.5	2	44.5	13.031	9043680130310
1 1/4	9/16	35.5	60.5	2	44.5	14.031	9043680140310
1 1/4	5/8	35.5	60.5	2	50.5	15.031	9043680150310
1 1/4	11/16	35.5	60.5	2	50.5	17.031	9043680170310
1 1/4	3/4	35.5	60.5	2	50.5	19.031	9043680190310
1 1/4	13/16	35.5	60.5	2	50.5	20.031	9043680200310
1 1/4	7/8	35.5	60.5	2	50.5	22.031	9043680220310
1 1/4	15/16	35.5	60.5	2	58.5	24.031	9043680240310
1 1/4	1	35.5	60.5	2	58.5	25.031	9043680250310
1 1/4	8	35.5	60.5	2	37.5	108.031	9043681080310
1 1/4	10	35.5	60.5	2	40.5	110.031	9043681100310
1 1/4	12	35.5	60.5	2	44.5	112.031	9043681120310
1 1/4	14	35.5	60.5	2	44.5	114.031	9043681140310
1 1/4	16	35.5	60.5	2	50.5	116.031	9043681160310
1 1/4	18	35.5	60.5	2	50.5	118.031	9043681180310

Reduction sleeves for hydraulic chucks, sealed

							Series no.	4368
d ₁ inch/mm	for shank Ø d ₃ h ₆ inch/mm	d ₂ mm	l ₁ mm	l ₂ mm	l ₃ mm	Code no.	EDP Number	
1 1/4	20	35.5	60.5	2	50.5	120.031	9043681200310	
1 1/4	25	35.5	60.5	2	58.5	125.031	9043681250310	
12	1/8	16.5	45	2	26.5	103.012	9043681030120	
12	3/16	16.5	45	2	26.5	104.012	9043681040120	
12	1/4	16.5	45	2	34.5	106.012	9043681060120	
12	5/16	16.5	45	2	34.5	108.012	9043681080120	
12	3/8	16.5	45	2	34.5	109.012	9043681090120	
12	3	16.5	45	2	26.5	3.012	9043680030120	
12	4	16.5	45	2	26.5	4.012	9043680040120	
12	5	16.5	45	2	26.5	5.012	9043680050120	
12	6	16.5	45	2	34.5	6.012	9043680060120	
12	8	16.5	45	2	34.5	8.012	9043680080120	
20	1/8	24	50.5	2	28.5	103.020	9043681030200	
20	3/16	24	50.5	2	28.5	104.020	9043681040200	
20	1/4	24	50.5	2	37.5	106.020	9043681060200	
20	5/16	24	50.5	2	37.5	108.020	9043681080200	
20	3/8	24	50.5	2	42.5	109.020	9043681090200	
20	7/16	24	50.5	2	42.5	111.020	9043681110200	
20	1/2	24	50.5	2	47.5	113.020	9043681130200	
20	9/16	24	50.5	2	47.5	114.020	9043681140200	
20	5/8	24	50.5	2	47.5	115.020	9043681150200	
20	3	24	50.5	2	28.5	3.020	9043680030200	
20	4	24	50.5	2	28.5	4.020	9043680040200	
20	5	24	50.5	2	28.5	5.020	9043680050200	
20	6	24	50.5	2	37.5	6.020	9043680060200	
20	7	24	50.5	2	37.5	7.020	9043680070200	
20	8	24	50.5	2	37.5	8.020	9043680080200	
20	9	24	50.5	2	42.5	9.020	9043680090200	
20	10	24	50.5	2	42.5	10.020	9043680100200	
20	11	24	50.5	2	42.5	11.020	9043680110200	
20	12	24	50.5	2	47.5	12.020	9043680120200	
20	13	24	50.5	2	47.5	13.020	9043680130200	
20	14	24	50.5	2	47.5	14.020	9043680140200	
20	15	24	50.5	2	47.5	15.020	9043680150200	
20	16	24	50.5	2	47.5	16.020	9043680160200	
32	1/4	35.5	60.5	2	37.5	106.032	9043681060320	
32	5/16	35.5	60.5	2	37.5	108.032	9043681080320	
32	3/8	35.5	60.5	2	37.5	109.032	9043681090320	
32	7/16	35.5	60.5	2	40.5	111.032	9043681110320	
32	1/2	35.5	60.5	2	44.5	113.032	9043681130320	
32	9/16	35.5	60.5	2	50.5	114.032	9043681140320	
32	5/8	35.5	60.5	2	50.5	115.032	9043681150320	
32	11/16	35.5	60.5	2	50.5	117.032	9043681170320	
32	3/4	35.5	60.5	2	50.5	119.032	9043681190320	
32	13/16	35.5	60.5	2	50.5	120.032	9043681200320	
32	7/8	35.5	60.5	2	50.5	122.032	9043681220320	
32	15/16	35.5	60.5	2	50.5	124.032	9043681240320	
32	1	35.5	60.5	2	58.5	125.032	9043681250320	
32	6	35.5	60.5	2	37.5	6.032	9043680060320	
32	8	35.5	60.5	2	37.5	8.032	9043680080320	
32	10	35.5	60.5	2	40.5	10.032	9043680100320	
32	12	35.5	60.5	2	44.5	12.032	9043680120320	
32	14	35.5	60.5	2	44.5	14.032	9043680140320	
32	16	35.5	60.5	2	50.5	16.032	9043680160320	
32	18	35.5	60.5	2	50.5	18.032	9043680180320	
32	20	35.5	60.5	2	50.5	20.032	9043680200320	
32	25	35.5	60.5	2	58.5	25.032	9043680250320	

Extraction key for reduction bushes

Product information

- for Series no. 4368 and 4369
- for the simple removal of reduction bushes



	Series no.
	4099
for reduction bushes d ₁	EDP Number
12 to 32	9040990010000

Senso 3000

Product information

- accurate, quick and simple measuring of the clamping force of hydraulic chucks
- mobility allows measuring within machines and fixtures
- determines clamping force via a pressure sensitive plug gauge
- display of absolute measuring value or percentage clamping force in relation to reference value

Scope of delivery

- incl. type CR 2430 battery
- incl. sturdy case
- Inch dimensions upon request



		Series no.
		4038
clamping diameter mm	kg	EDP Number
6.0	1.1	9040380060000
8.0	1.1	9040380080000
10.0	1.3	9040380100000
12.0	1.3	9040380120000
14.0	1.3	9040380140000
16.0	1.3	9040380160000
18.0	1.5	9040380180000
20.0	1.5	9040380200000
25.0	2.0	9040380250000
32.0	2.5	9040380320000