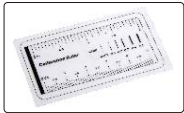
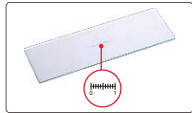


WiFi DIGITAL MEASURING MICROSCOPE PART NO. ISM-WF200



plastic calibration rule
(included,
graduation 1mm/.039")



glass calibration rule
(included,
graduation 0.1mm/.004")



VIDEO

- Maximum working distance is 200" under WiFi mode
- Can be connected to multiple iPads, Android devices or computers at the same time under WiFi mode
- Take pictures and videos
- Supplied with software

SPECIFICATION

Magnification	10X~200X
Pixel	1.3M (resolution: 1280×1024)
Illumination	built-in adjustable LED
Power supply	built-in rechargeable battery

STANDARD DELIVERY

Microscope	1 pc
Base support	1 pc
Focus support ring for 80X/150X	1 pc
Focus support ring for 60X/200X	1 pc
Glass calibration rule (graduation 0.1mm/.004")	1 pc
Plastic calibration rule (graduation 1mm/.039")	1 pc
USB cable and software	1 pc
AC/DC adapter	1 pc

OPTIONAL ACCESSORY

Stand	ISM-PM-STAND
Green filter	ISM-PM-GREEN
Yellow filter	ISM-PM-YELLOW
Blue filter	ISM-PM-BLUE

stand (part no.
ISM-PM-STAND,
optional)



filter (optional)



connected to iPad by WiFi



connected to Android device by WiFi



connected to computer by WiFi



connected to computer by USB cable

MAGNIFICATION, FOCUS DISTANCE, VIEW FIELD AND ACCURACY

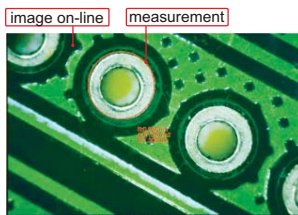
Magnification	Focus distance	View field	Accuracy
50X	.83"	.32×.25"	1.2mil
100X	.51"	.15×.12"	0.6mil
150X	.63"	.10×.08"	0.4mil
200X	.75"	.07×.06"	0.3mil



software CD
(included)

1 Software ISM-PAD (for iPad by WiFi)

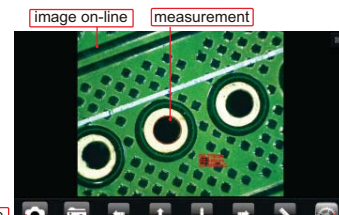
- measure length of line or distance between two points
- measure angle
- measure radius, girth and area of circle with three points



take picture and video, image on-line, measurement, resolution setting, move measuring point, picture taken before, measuring tools and calibration, take picture/video switch

2 Software ISM-APK (for Android devices by WiFi)

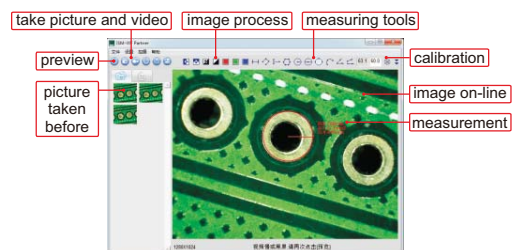
- measure length of line or distance between two points
- measure angle
- measure radius, girth and area of circle with three points



take picture, image on-line, measurement, resolution setting, picture taken before, move measuring point, measuring tools and calibration, picture taken before

3 Software ISM-WF Partner (for computer by WiFi)

- measure length of line or distance between two points
- measure area of polygon
- measure angle with three points
- measure radius, girth and area of circle with center point
- measure length of continuous line
- measure radius, girth and area of circle with three points
- measure angle with two lines
- measure radius, girth and area of circle with two points
- measure distance between point and line
- measure radius, length and angle of arc
- measure area of rectangle



take picture and video, image process, measuring tools, preview, picture taken before, calibration, image on-line, measurement

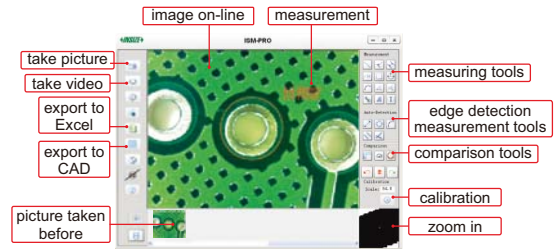
To be continued

Continued from previous page

4 Software ISM-PRO (for computer by USB cable)

Measuring tools:

- measure length of line or distance between two points
- measure length of continuous line
- measure radius, length and angle of arc
- measure distance between two circles
- measure distance between two parallel lines
- measure radius, girth and area of circle
- measure distance between point and line
- measure area of rectangle
- measure angle with three points
- add text
- measure angle with two lines
- add number with circle



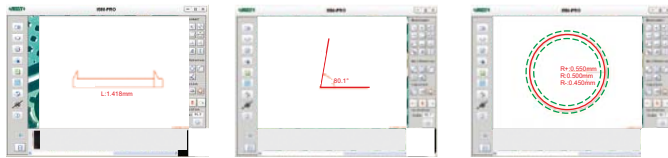
Edge detection measurement tools:

- detect line automatically, and calculate length
- detect circle automatically, and calculate radius, girth and area
- detect two lines automatically, and calculate angle
- detect arc automatically, and calculate radius, angle and arc length
- detect two parallel lines automatically, and calculate distance

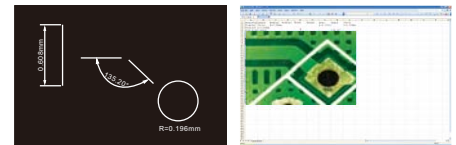
Comparison tools:

Create line, angle or circle with desired size, to compare with workpieces

- create line
- create angle
- create circle with tolerance



Data export to CAD or Excel:



TV DIGITAL MICROSCOPES

stand (part no. ISM-PM-STAND, optional)



ISM-TV200 (with wire)



ISM-TV200W (wireless)

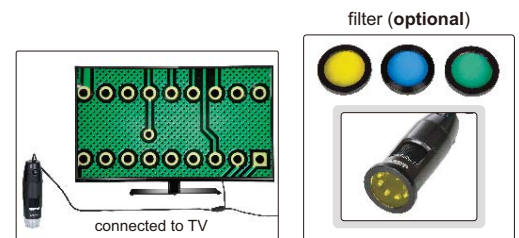
ATTENTION: NOT FOR MEASUREMENT, NOT SUITABLE FOR COMPUTERS



- Connected to TV directly
- For observation, cannot take pictures and videos

SPECIFICATION

Part No.	ISM-TV200	ISM-TV200W
Type	with wire	wireless (maximum transmission distance 200")
Magnification	10X~200X (on 17" TV)	
Pixel	0.35M	
Illumination	adjustable brightness LED	
Focus	supplied with focus ring, stand (ISM-PM-STAND) is optional	
Power supply	DC	built-in rechargeable battery



MAGNIFICATION, FOCUS DISTANCE AND VIEW FIELD

ISM-TV200			ISM-TV200W		
Magnification	Focus distance	View field	Magnification	Focus distance	View field
50X	.83"	.32×.25"	60X	.75"	.27×.20"
100X	.51"	.15×.12"	80X	.63"	.20×.15"
150X	.63"	.10×.08"	150X	.63"	.10×.08"
200X	.75"	.07×.06"	200X	.75"	.07×.06"

OPTIONAL ACCESSORY

Green filter	ISM-PM-GREEN
Yellow filter	ISM-PM-YELLOW
Blue filter	ISM-PM-BLUE