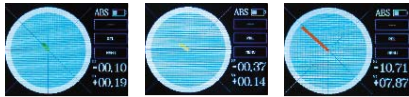


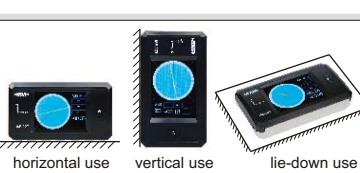
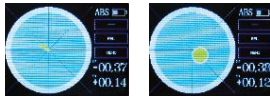
## ELECTRONIC LEVEL PART NO. ISE-2DT

- Color LCD, touch panel
- X-Y axis measurement
- Set the tolerance and the display is shown in different colors

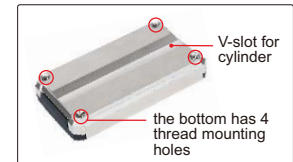


within the tolerance (green)    slightly out of the tolerance (yellow)    seriously out of the tolerance (red)

- To show the incline with line or bubble



DATA OUTPUT



### SPECIFICATION

Measuring range	±30°
Resolution	0.01°, 0.1mm/m(=0.001in/ft)
Accuracy	±0.03° (range 0~3°) ±0.05° (range >3°)
Power supply	rechargeable battery
Dimension	4.53×2.60×.91"
Weight	0.49lb



### STANDARD DELIVERY

Main unit	1 pc
USB cable	1 pc

### OPTIONAL ACCESSORY

Software	ISE-2DT-SOFTWARE
----------	------------------

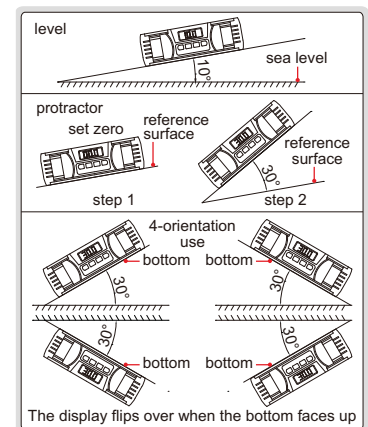
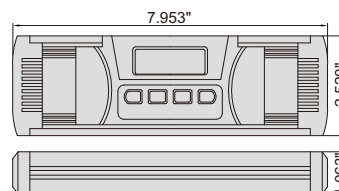
## ELECTRONIC LEVEL AND PROTRACTOR

- IP67 WATERPROOF
- ABSOLUTE LEVEL
- BACKLIGHT
- BUZZER ALARM AT 0° AND 90°

- IP67 dust/waterproof
- Aluminum frame, shock absorbing rubber end caps
- Magnetic bottom with V-groove for shafts
- The sea level is permanently set inside the chip, zero setting is not needed when batteries are replaced
- Buttons: ON/OFF, backlight/buzzer alarm, absolute and incremental measurement, unit (°, %, mm/m), HOLD (keep the reading)
- Three AAA batteries
- Automatic power off



2175-360



Part No.	Range	Resolution	Accuracy
2175-360	0-360° (90°x4)	0.05° (=0.873mm/m)	at 0°: ±0.05°; others: ±0.1°

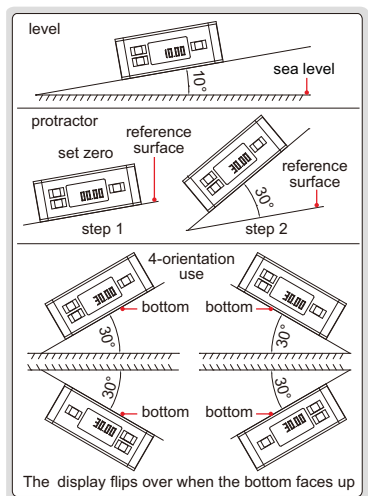
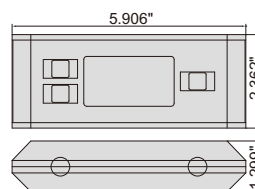
## ELECTRONIC LEVEL AND PROTRACTOR

- IP54 WATERPROOF
- ABSOLUTE LEVEL
- BACKLIGHT
- BUZZER ALARM AT 0° AND 90°

- IP54 dust/waterproof
- Aluminum frame
- Magnetic bottom with V-groove for shafts
- The sea level is permanently set inside the chip, zero setting is not needed when batteries are replaced
- Buttons: ON/OFF, absolute and incremental measurement, keep the reading, buzzer alarm, unit (in/ft, %, mm/m), backlight
- Two AAA batteries
- Automatic power off



2179-360



Part No.	Range	Resolution	Accuracy
2179-360	0-360° (90°x4)	0.05°/1.25in/ft	at 0° and 90°: ±0.1°; others: ±0.2°