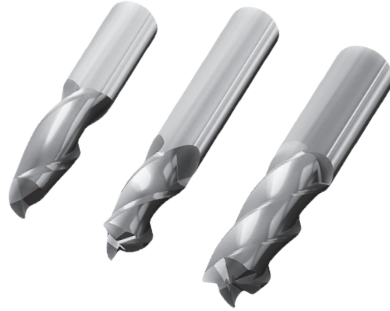


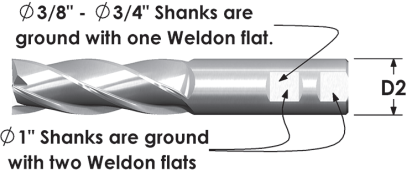
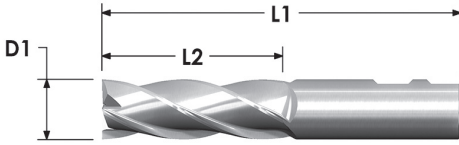
**FEATURING:**

- These end mills feature a .001" plus tolerance on the cutting diameter.



**Tolerances:**  
Cutter Diameter: +.001"/-0"

**Page 274**  
for Coating  
Info



EMS				Cutter Diameter (D1)	Flute Length (L2)	Overall Length (L1)
2 FLUTE Catalog No.	3 FLUTE Catalog No.	4 FLUTE Catalog No.	6 FLUTE Catalog No.			
<b>1/8" Shanks – D2</b>				inch	inch	inch
EMS-031-2	EMS-031-3	EMS-031-4	–	1/32	5/64	1.500
EMS-062-2	EMS-062-3	EMS-062-4	–	1/16	3/16	1.500
EMS-093-2	EMS-093-3	EMS-093-4	–	3/32	3/8	1.500
EMS-125-2	EMS-125-3	EMS-125-4	–	1/8	1/2	1.500
<b>3/16" Shanks – D2</b>						
EMS-156-2	EMS-156-3	EMS-156-4	–	5/32	9/16	2.000
EMS-187-2	EMS-187-3	EMS-187-4	–	3/16	5/8	2.000
<b>1/4" Shanks – D2</b>						
–	EMS-218-3	–	–	7/32	5/8	2.500
EMS-250-2	EMS-250-3	EMS-250-4	–	1/4	3/4	2.500
<b>5/16" Shanks – D2</b>						
–	–	EMS-312-4	–	5/16	13/16	2.500
<b>3/8" Shanks – D2</b>						
EMS-375-2	EMS-375-3	EMS-375-4	–	3/8	7/8	2.500
<b>7/16" Shanks – D2</b>						
EMS-437-2	–	–	–	7/16	1	2.500
<b>1/2" Shanks – D2</b>						
EMS-500-2	EMS-500-3	EMS-500-4	–	1/2	1	3.000
<b>9/16" Shanks – D2</b>						
EMS-562-2	–	EMS-562-4	–	9/16	1-1/4	3.500
<b>5/8" Shanks – D2</b>						
–	EMS-625-3	EMS-625-4	–	5/8	1-1/4	3.500
<b>11/16" Shanks – D2</b>						
–	EMS-687-3	–	–	11/16	1-3/8	4.000
<b>3/4" Shanks – D2</b>						
EMS-750-2	–	EMS-750-4	–	3/4	1-1/2	4.000
<b>1" Shanks – D2</b>						
EMS-001-2	EMS-001-3	–	EMS-001-6	1	2-1/2	5.000