

Original Fixture Clamps

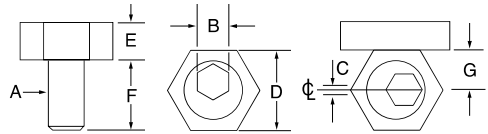


The cam action MITEE-BITE Fixture Clamp is made up of two simple components: a hardened steel socket cap screw with an offset head and a brass hexagonal washer.

- ▶ Low-profile for quick and easy installation of linear motion guide rails
- ▶ Cam action provides fast, strong clamping
- ▶ Small size allows more parts per load
- ▶ Simple design keeps cost low



- ▶ 50218 our most popular LMGR size available in bulk



G* - Location to drill and tap from edge of workpiece.

NOTE: Clockwise rotation is recommended. Locating pin should be on the right of workpiece.

Part Number	A	B	C	D	E	F	G*	Torque (Ft/Lbs)	Holding Force	Clamps Per Pack*	—Replacement—	
											Cam Screw	Hex Washer
INCH												
10202	8 - 32	5/64	.030	.312	.110	.350	.150	1.5	205 lbs	10	10363	10580
10207	10 - 32	3/32	.040	.500	.160	.340	.250	2.5	350 lbs	10	10366	10587
10204	1/4 - 20	1/8	.040	.625	.190	.470	.308	6.2	800 lbs	10	10365	10582
10205	5/16 - 24	3/16	.040	.812	.180	.460	.400	8.3	800 lbs	12	10369	10584
10201	5/16 - 18	3/16	.040	.812	.180	.460	.400	8.3	800 lbs	12	10367	10584
10206	3/8 - 16	3/16	.050	.812	.250	.710	.400	20.8	2,000 lbs	10	10371	10586
10208	1/2 - 13	5/16	.100	1.000	.375	.900	.500	65.0	4,000 lbs	8	10373	10588
10210	5/8 - 11	3/8	.100	1.187	.500	1.125	.590	100.0	6,000 lbs	4	10375	10592
Torque (N.m.)												
METRIC												
50204	M4	3	.76	7.93	2.80	9.6	3.80	2.0	910 N	10	50363	10580
50206	M6	4	1.01	15.86	4.75	11.2	7.80	8.5	3,558 N	10	50365	10582
50208	M8	5	1.01	20.61	4.55	15.0	10.15	11.3	3,558 N	12	50367	10584
50210	M10	7	1.27	20.61	6.35	19.0	10.15	28.0	8,895 N	10	50369	10586
50212	M12	8	2.03	25.38	9.52	22.8	12.70	88.0	17,790 N	8	50371	10590
50216	M16	12	2.54	30.13	12.70	28.5	15.00	125.0	26,680 N	4	50373	10592
50218	M8	5	1.01	20.61	4.55	15.0	10.15	11.3	3,558 N	bulk	502181	10584
STAINLESS STEEL (300 Series)												
10214	8 - 32	5/64	.030	.312	.110	.350	.150	1.5 Ft. Lbs	205 lbs	4	10362	10581
10203	1/4 - 20	1/8	.040	.625	.190	.470	.308	6.2 Ft. Lbs	800 lbs	4	10364	10583
10213	5/16 - 18	3/16	.040	.812	.250	.460	.400	8.3 Ft. Lbs	800 lbs	4	10368	10585
50214	M4	3mm	.76mm	7.93mm	2.80mm	9.6mm	3.80mm	2.0(N.m.)	910 N	4	50361	10581
50205	M6	4mm	1.01mm	15.86mm	4.75mm	11.2mm	7.80mm	8.50(N.m.)	3,558 N	4	50364	10583
50207	M8	5mm	1.01mm	20.60mm	4.35mm	15.0mm	10.15mm	11.30(N.m.)	3,558 N	4	50366	10585

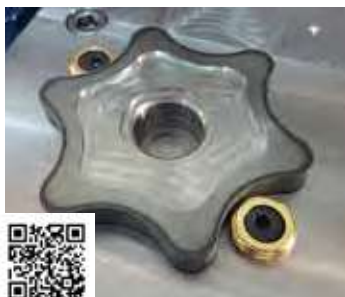
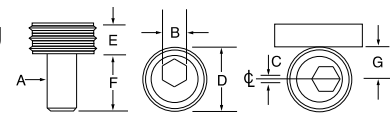
* - All clamps may be purchased in bulk packages of 50 pcs. or more.

Knife Edge Clamps



Our Knife Edge Clamps can be used instead of the original brass hex clamps for clamping rough cut stock, castings and any material that requires a hardened clamping element. Same "G" dimension as Original Fixture

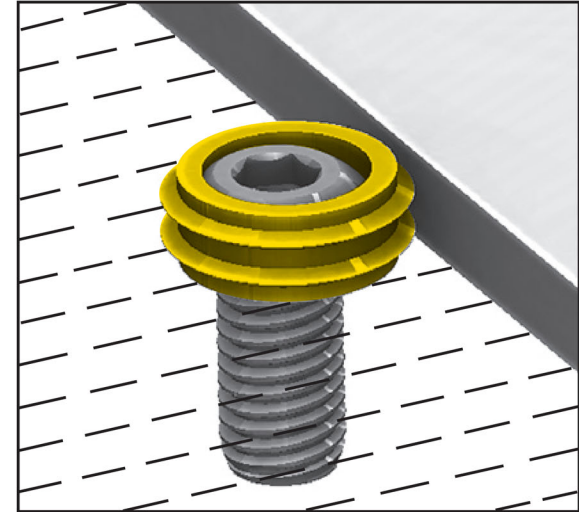
Clamps above. Clamps produced in 12L14 steel with a nickel coating.



Part Number	A	B	C	D	E	F	G	Max. Torque (Ft/Lbs)	Holding Force (Lbs)	Number of Clamps Per Pack	- Replacement -	
											Cam Screw	Washer
INCH												
22584	3/8 - 16	3/16	.050	.812	.250	.710	.400	16.6	2,000	8	10371	12584
22588B	1/2 - 13	5/16	.080	1.000	.375	.900	.500	52.0	4,000	8	10374	12588B
22592	5/8 - 11	3/8	.100	1.187	.500	1.125	.590	80.0	6,000	4	10375	12592
(N.m.) (N.)												
METRIC												
82584	M10	7M	1.27	20.60	6.35	19.0	10.15	28.00	8900	8	50369	12584
82588	M12	8M	2.03	25.40	9.52	22.8	12.70	88.00	17800	8	50371	12588B
82592	M16	12M	2.54	30.15	12.70	28.5	15.00	135.00	26700	4	50373	12592

Not designed for clamping hardened material at maximum torque.

1. Drill and tap hole per drill chart.
2. Clear drill .060-.200 to account for a max. of 2 threads under the head.
3. Screw MITEE-BITE KNIFE EDGE CLAMP all the way down, then back off one turn. Can also be tightened counter clockwise.
4. Insert part and tighten MITEE-BITE screw.
5. CAUTION! Never assume clamp is tight, ALWAYS tighten clamp prior to machining.



DRILL CHART

DISTANCE FROM EDGE OF WORKPIECE

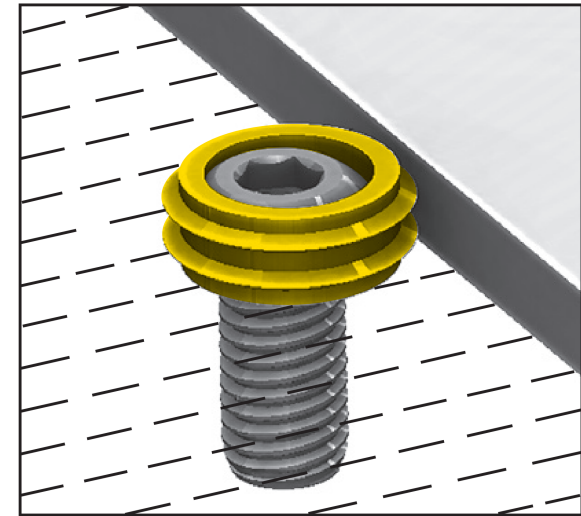
Model #	Thd. Size	Distance
MB-6	3/8-16	.400
MB-8	1/2-13	.500
MB-10	5/8-11	.590

NOTE: When using this style of clamp please ensure hard stop is recessed in slot or pinned and equal to or greater than height of clamp. This will prevent part from lifting.



WARNING: This product may contain a chemical known to the State of California to cause cancer or birth defects or other reproductive harm. www.P65Warnings.ca.gov.

1. Drill and tap hole per drill chart.
2. Clear drill 1.5mm to account for a max. of 2 threads under the head.
3. Screw MITEE-BITE KNIFE EDGE CLAMP all the way down, then back off one turn. Can also be tightened counter clockwise.
4. Insert part and tighten MITEE-BITE screw.
5. CAUTION! Never assume clamp is tight, ALWAYS tighten clamp prior to machining.



DRILL CHART

DISTANCE FROM EDGE OF WORKPIECE

Model #	Thd. Size	Distance
MB-M10	M10-1.50	10.15mm
MB-M12	M12-1.75	12.70mm
MB-M16	M16-2.0	15.00mm

NOTE: When using this style of clamp please ensure hard stop is recessed in slot or pinned and equal to or greater than height of clamp. This will prevent part from lifting.



WARNING: This product may contain a chemical known to the State of California to cause cancer or birth defects or other reproductive harm.
www.P65Warnings.ca.gov