

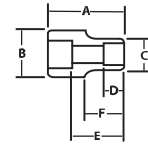


1/2" DRIVE DEEP SOCKETS, 6 POINT, METRIC

High-Polished Chrome Finish

Product Code	Size (MM)	A	B	C	D	E	Bolt Clearance Diameter (Inches)	Nose Length (Inches)
		OAL (Inches)	Drive End Diameter (Inches)	Working End Diameter (Inches)	Broach Depth (Inches)	Bolt Clearance Depth (Inches)		
32709	9	3 1/4	29/32	19/32	5/16	2 15/32	1 1/2	2 19/32
32710	10	3 1/4	29/32	19/32	5/16	2 15/32	1 1/2	2 19/32
32711	11	3 1/4	29/32	1 1/16	5/16	2 15/32	1 3/2	2 19/32
32712	12	3 1/4	29/32	23/32	13/32	2 15/32	7/16	2 19/32
32713	13	3 1/4	29/32	25/32	3/8	2 15/32	15/32	2 19/32
32714	14	3 1/4	29/32	27/32	3/8	2 15/32	15/32	2 19/32
32715	15	3 1/4	29/32	7/8	3/8	2 11/32	15/32	-
32716	16	3 1/4	29/32	29/32	9/16	2 11/32	15/32	-
32717	17	3 1/4	31/32	31/32	9/16	2 11/32	15/32	-
32718	18	3 1/4	1	1	13/16	2 11/32	15/32	-
32719	19	3 1/4	1 1/32	1 1/32	13/16	2 5/16	23/32	-
32720	20	3 1/4	1 1/16	1 1/16	13/16	2 5/16	23/32	-
32721	21	3 1/4	1 1/8	1 1/8	13/16	2 5/16	3/4	-
32722	22	3 1/4	1 9/16	1 9/16	13/16	2 5/16	25/32	-
32723	23	3 1/4	1 1/4	1 1/4	25/32	2 5/16	27/32	-
32724	24	3 1/4	1 9/32	1 9/32	13/16	2 5/16	7/8	-
32725	25	3 1/4	1 9/16	1 9/16	13/16	2 1/4	15/16	-
32726	26	3 1/4	1 3/8	1 3/8	29/32	2 1/4	31/32	-
32727	27	3 1/4	1 7/16	1 7/16	31/32	2 1/4	1	-
32728	28	3 1/4	1 1/2	1 1/2	1	2 1/4	1 1/32	-
32729	29	3 1/4	1 9/16	1 9/16	1 1/32	2 1/4	1 1/16	-
32730	30	3 1/4	1 3/8	1 3/8	1 1/32	2 1/4	1 3/32	-
32732	32	3 1/4	1 11/16	1 11/16	1 1/8	2 1/4	1 3/16	-
32734	34	3 1/4	1 3/4	1 3/4	7/8	2 1/4	1	-
32736	36	3 1/4	1 15/16	1 15/16	7/8	2 1/4	1 13/32	-

Fed. Spec: ANSI B107.5



32947 16 Piece 1/2" Drive Deep 6 Point Socket Set on Clip Rail

Contents Include:

Product Code	Size (MM)	Product Code	Size (MM)	Product Code	Size (MM)	Product Code	Size (MM)
32709	9	32713	13	32717	17	32721	21
32710	10	32714	14	32718	18	32722	22
32711	11	32715	15	32719	19	32723	23
32712	12	32716	16	32720	20	32724	24



32947

32945 24 Piece 1/2" Drive Deep 6 Point Socket Set on Clip Rail

Contents Include:

Product Code	Size (MM)	Product Code	Size (MM)	Product Code	Size (MM)	Product Code	Size (MM)
32709	9	32715	15	32721	21	32727	27
32710	10	32716	16	32722	22	32728	28
32711	11	32717	17	32723	23	32729	29
32712	12	32718	18	32724	24	32730	30
32713	13	32719	19	32725	25	32732	32
32714	14	32720	20	32726	26	32736	36



32945

Features

- SUPERTORQUE® lobular openings for greater turning power without deforming the fastener.
- Designed for quick engagement on both 6 and 12 point fasteners.



WARNING