

ULTRATOOL® Solid Carbide Drill Mills

SFR Drill-Mill Specifications:
Diameter +.000/-0.002
Point Angle ±1°

Series 535
Two Flute Drill Mill
Four Facet Point • 4 included angles



new!

Additional sizes and included angles!

Series 536
Four Flute Drill Mill
Four Facet Point • 4 included angles



∅	Diam	LOF	OAL	60° EDP#	82° EDP#	90° EDP#	120° EDP#	UnCoated Price	Coated Price
1/8	1/8	1/2	1-1/2	53083	53091	53508	53099	\$9.30	\$11.00
3/16	3/16	5/8	2"	53084	53092	53512	53100	\$13.80	\$15.60
1/4	1/4	3/4	2-1/2	53085	53093	53516	53101	\$17.00	\$20.60
5/16	5/16	13/16	2-1/2	53086	53094	53520	53102	\$24.00	\$28.40
3/8	3/8	1"	2-1/2	53087	53095	53524	53103	\$30.20	\$34.50
1/2	1/2	1"	3"	53088	53096	53532	53104	\$46.60	\$52.70
5/8	5/8	1-1/2	3-1/2	53089	53097	53536	53105	\$90.50	\$99.50
3/4	3/4	1-1/2	4"	53090	53098	53540	53106	\$130.70	\$141.60

∅	Diam	LOF	OAL	60° EDP#	82° EDP#	90° EDP#	120° EDP#	UnCoated Price	Coated Price
1/8	1/8	1/2	1-1/2	53107	53115	53608	53123	\$9.30	\$11.00
3/16	3/16	5/8	2"	53108	53116	53612	53124	\$13.80	\$15.60
1/4	1/4	3/4	2-1/2	53109	53117	53616	53125	\$17.00	\$20.60
5/16	5/16	13/16	2-1/2	53110	53118	53620	53126	\$24.00	\$28.40
3/8	3/8	1"	2-1/2	53111	53119	53624	53127	\$30.20	\$34.50
1/2	1/2	1"	3"	53112	53120	53632	53128	\$46.60	\$52.70
5/8	5/8	1-1/2	3-1/2	53113	53121	53636	53129	\$90.50	\$99.50
3/4	3/4	1-1/2	4"	53114	53122	53640	53130	\$130.70	\$141.60



Our manufacturing system is designed to give our customers consistency in product from order to order, and application to application.

Coating Spotlight • SmoothCoat TA

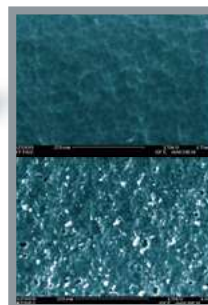


Ultra's TiAlN coating is the all-around workhorse of our SmoothCoat selections. First, a brief word regarding the two types of PVD coating, "sputter" and "arc." SmoothCoat is a sputter-based process and, unlike arc, the materials to be deposited on the tools are not melted down, but rather transferred directly from a solid to a gaseous state. This means that zero "droplets" (bead-shaped macro particles) form on the tool surface, leading to the smoothest surface possible. Why doesn't everyone use sputter technology? The answer is it takes longer (i.e. more expensive, and toll coaters can't do as many loads in a day).

Classified as a Supernitride type of PVD, our TA nanocomposite coating has low residual stress which provides excellent adhesion and stability. Even with thickness of 3-4 microns, sharpness is retained on the cutting edge with corresponding low friction at the work piece material level. This true performance coating can withstand application temperatures of 1000°C, has a microhardness of over 3500HV, and can be used wet or dry over a wide variety of applications and materials. SmoothCoat TA is available standard on thousands of items in this catalog... try it today!

'SECRET MENU' ITEM: TA is so smooth with such great adhesion and low stress levels that we can effectively "double-up" the thickness level to 6-8 microns! We call this "A2" and use it in special applications, primarily within our Mil-Tec indexable carbide product line. However, with our SmoothGrind so sharp and our sputter technology so precise on layering the underlying tool, we can retain an amazingly precise cutting edge feature. Consider A2 in heavy wear apps and roughing cuts where chip load per tooth is maximized. Ask your inside sales rep for it by name.

SmoothCoat®



Our coating magnified to 2,000X (top). Everybody else's (bottom). Our sputter technology has no droplets and features a smooth, clean surface.

Application Data for Standard ULTRATOOL End Mills

The milling data presented below is for all "standard" Series of Ultra end mills (data is presented separately on each respective product page for our application-specific high performance designs). Note: When using SmoothCoat & SmoothEdge surface treatments, Surface Feet or Meters Per Minute can be increased from the stated levels by at least 25%.



Peripheral Milling data based on axial depth ≤ 100% of tool diameter & radial depth of ≤ 25% of tool diameter.



Slot Milling data based on axial depth of cut = 50% of tool diameter.

End Mill Specifications:
Diameter: +.000 / -.002
Shank Diameter: +.0000 / -.0003
LOC: +.060 / -.000
OAL: ± .060
Helix: ± 2°

Milling;
Fractional

Material	SFPM	SFPM	1/8"	3/16"	1/4"	5/16"	3/8"	7/16"	1/2"	5/8"	3/4"	1"
Steel	Peripheral	Slotting										
1018 / 1020	150 to 350	150 to 300	.0005	.0010	.0015	.0018	.0020	.0025	.0030	.0035	.0040	.0045
4140 / 4340 / P20	150 to 300	125 to 225	.0005	.0007	.0010	.0012	.0015	.0018	.0020	.0025	.0030	.0040
Stainless Steel												
303 / 304 / 316	150 to 300	125 to 250	.0005	.0007	.0010	.0012	.0015	.0018	.0020	.0030	.0040	.0040
410 / 420 / 440C	150 to 300	125 to 250	.0005	.0007	.0010	.0012	.0015	.0018	.0020	.0025	.0035	.0038
15-5/17-4 ≤ 32HRc	125 to 250	100 to 225	.0005	.0007	.0010	.0012	.0015	.0018	.0020	.0025	.0030	.0038
15-5/17-4 ≥ 32HRc	100 to 150	100 to 150	.0003	.0005	.0010	.0012	.0015	.0015	.0015	.0020	.0030	.0038
13-8 / 316L	125 to 300	125 to 250	.0005	.0007	.0010	.0012	.0015	.0018	.0020	.0030	.0040	.0040
Tool Steel												
A2/D2/H13 ≤ 32HRc	125 to 250	100 to 200	.0005	.0007	.0010	.0012	.0015	.0018	.0020	.0025	.0030	.0035
A2/D2/H13 ≥ 32HRc	100 to 150	100 to 125	.0003	.0005	.0010	.0012	.0015	.0015	.0015	.0020	.0030	.0035
Titanium												
6Al-4V	120 to 250	100 to 175	.0005	.0007	.0010	.0012	.0012	.0018	.0020	.0020	.0030	.0040
High Temp Alloys												
Inconel 625	50 to 150	50 to 125	.0005	.0007	.0010	.0012	.0012	.0018	.0020	.0020	.0025	.0030
Inconel 718	50 to 150	50 to 125	.0003	.0005	.0010	.0012	.0012	.0015	.0015	.0020	.0025	.0025
Cast Iron												
Gray Iron ≤ 32HRc	150 to 350	125 to 300	.0005	.0007	.0010	.0012	.0015	.0018	.0020	.0030	.0040	.0045
Ductile Iron	150 to 300	125 to 250	.0005	.0007	.0010	.0012	.0015	.0018	.0020	.0025	.0035	.0045
Non-Ferrous												
6061 T6 Aluminum	up to 2000	up to 1500	.0010	.0020	.0020	.0025	.0030	.0035	.0040	.0050	.0060	.0070
Copper, Brass, Bronze	up to 1200	up to 1000	.0010	.0010	.0020	.0022	.0025	.0028	.0030	.0040	.0040	.0050
Plastic	up to 2000	up to 1500	.0010	.0020	.0030	.0035	.0040	.0050	.0060	.0080	.0100	.0120

Metric End Mill Specifications:		Diameter (mm): +.000 / -.051mm		Shank Diameter(mm): +.000 / -.007mm		LOC: +1.52 / -0.00mm		OAL: ±1.52mm		Metric		
Material	SMPM	SMPM	2mm	3mm	4mm	6mm	8mm	10mm	12mm	16mm	20mm	25mm
Steel	Peripheral	Slotting										
1018 / 1020	45 to 110	45 to 90	0.010	0.012	0.025	0.038	0.045	0.050	0.080	0.090	0.100	0.120
4140 / 4340 / P20	45 to 90	40 to 70	0.010	0.012	0.018	0.025	0.030	0.038	0.050	0.065	0.080	0.100
Stainless Steel												
303 / 304 / 316	45 to 90	40 to 75	0.010	0.012	0.018	0.025	0.030	0.038	0.050	0.080	0.100	0.100
410 / 420 / 440C	45 to 90	40 to 75	0.010	0.012	0.018	0.025	0.030	0.038	0.050	0.065	0.080	0.100
15-5/17-4 ≤ 32HRc	38 to 75	30 to 70	0.010	0.012	0.018	0.025	0.030	0.038	0.050	0.065	0.080	0.100
15-5/17-4 ≥ 32HRc	30 to 45	30 to 45	0.005	0.007	0.012	0.025	0.030	0.038	0.038	0.050	0.080	0.100
13-8 / 316L	38 to 90	40 to 75	0.010	0.012	0.018	0.025	0.030	0.038	0.050	0.080	0.100	0.100
Tool Steel												
A2/D2/H13 ≤ 32HRc	38 to 75	30 to 60	0.010	0.012	0.018	0.025	0.030	0.038	0.050	0.065	0.080	0.090
A2/D2/H13 ≥ 32HRc	30 to 45	30 to 40	0.005	0.007	0.012	0.025	0.030	0.038	0.038	0.050	0.080	0.090
Titanium												
6Al-4V	35 to 75	30 to 53	0.010	0.012	0.018	0.025	0.030	0.038	0.050	0.065	0.080	0.100
High Temp Alloys												
Inconel 625	15 to 45	15 to 38	0.010	0.012	0.018	0.025	0.030	0.038	0.050	0.050	0.065	0.070
Inconel 718	15 to 45	15 to 38	0.005	0.007	0.012	0.025	0.030	0.038	0.038	0.050	0.065	0.065
Cast Iron												
Gray Iron ≤ 32HRc	45 to 110	40 to 90	0.010	0.012	0.018	0.025	0.030	0.038	0.050	0.080	0.100	0.120
Ductile Iron	45 to 90	40 to 75	0.010	0.012	0.018	0.025	0.030	0.038	0.050	0.065	0.090	0.120
Non-Ferrous												
6061 T6 Aluminum	up to 600	up to 450	0.020	0.025	0.050	0.050	0.064	0.080	0.100	0.130	0.150	0.180
Copper, Brass, Bronze	up to 365	up to 300	0.020	0.025	0.025	0.050	0.056	0.065	0.080	0.100	0.100	0.130
Plastic	up to 600	up to 450	0.020	0.025	0.050	0.080	0.089	0.100	0.150	0.200	0.250	0.300

Application Data for ULTRATOOL® Drills



Drilling speeds and feeds are based upon hole depth of up to 3X diameter. For deeper hole ratios reduce speeds and feeds by 10% to 25%.



Drilling;
Fractional

Material	SFPM	SFPM	1/16"	1/8"	3/16"	1/4"	5/16"	3/8"	7/16"	1/2"	5/8"	3/4"
Steel	UnCoated	SmoothCoat				Feed Rate: Inches Per Rev (IPR)						
1018 / 1020	100 to 250	100 to 300	.0010	.0030	.0050	.0070	.0090	.0100	.0110	.0120	.0140	.0160
4140 / 4340 / P20	60 to 230	60 to 260	.0010	.0030	.0050	.0070	.0090	.0100	.0110	.0120	.0140	.0160
Stainless Steel												
303 / 304 / 316	60 to 150	60 to 200	.0010	.0030	.0050	.0060	.0070	.0080	.0090	.0100	.0120	.0140
410 / 420 / 440C	40 to 100	40 to 150	.0010	.0030	.0050	.0060	.0070	.0080	.0090	.0100	.0120	.0140
15-5/17-4 ≤ 32HRc	75 to 175	75 to 200	.0010	.0015	.0025	.0040	.0050	.0060	.0070	.0080	.0090	.0100
15-5/17-4 ≥ 32HRc	50 to 125	50 to 150	.0005	.0010	.0015	.0025	.0030	.0035	.0038	.0040	.0050	.0060
13-8 / 316L	60 to 150	60 to 200	.0010	.0030	.0050	.0060	.0070	.0080	.0090	.0100	.0120	.0140
Tool Steel												
A2/D2/H13 ≤ 32HRc	60 to 150	60 to 200	.0010	.0015	.0025	.0040	.0050	.0060	.0070	.0080	.0090	.0100
A2/D2/H13 ≥ 32HRc	40 to 100	40 to 150	.0005	.0010	.0015	.0025	.0028	.0030	.0035	.0040	.0050	.0060
Titanium												
6Al-4V	40 to 150	40 to 175	.0005	.0010	.0020	.0025	.0028	.0030	.0035	.0040	.0050	.0060
High Temp Alloys												
Inconel 625	30 to 70	30 to 80	.0010	.0015	.0025	.0040	.0050	.0060	.0070	.0080	.0090	.0100
Inconel 718	30 to 45	30 to 50	.0005	.0010	.0020	.0025	.0028	.0030	.0035	.0040	.0050	.0060
Cast Iron												
Gray Iron ≤ 32HRc	150 to 300	150 to 350	.0010	.0030	.0050	.0070	.0085	.0100	.0110	.0120	.0140	.0160
Ductile Iron	150 to 300	150 to 350	.0010	.0030	.0050	.0070	.0085	.0100	.0110	.0120	.0140	.0160
Non-Ferrous												
6061 T6 Aluminum	250 to 750	250 to 1000	.0010	.0030	.0050	.0070	.0085	.0100	.0110	.0120	.0140	.0160
Copper, Brass, Bronze	150 to 400	150 to 500	.0010	.0030	.0050	.0070	.0085	.0100	.0110	.0120	.0140	.0160
Plastic	250 to 1000	250 to 1000	.0010	.0030	.0050	.0070	.0085	.0100	.0110	.0120	.0140	.0160

Drill Specifications:

Diameter: +.0000 / -.0003

LOC: +.060 / -.090

OAL: +.060 / -.090

Point Angle: ±1°

Helix Angle: ±1°

Note: Series 560 Combined Drill/C'sink:

Body Diameter: +.0000 / -.0003

Drill Diameter: +.003 / -.000

Ultra-Tool® drills feature diameter tolerances 40% tighter than industry standards. Plus, all shanks are SFR (shrink-fit ready).

Try our drills with standard SmoothCoat for a superb leap in lubricity, productivity, and tool life.



Complete range of Brad Point drills with D1 coating!

Application Data for ULTRATOOL® Burrs

Burr Diam	Diam Metric	# Flutes Std Cut	RPM*	Max. RPM
1/16	1.6 mm	6	60,000 - 90,000	100,000
1/8	3.2 mm	12	40,000 - 70,000	80,000
3/16	4.8 mm	15	35,000 - 60,000	70,000
1/4	6.3 mm	16	30,000 - 50,000	60,000
5/16	8.0 mm	18	20,000 - 40,000	52,000
3/8	9.5 mm	20	20,000 - 40,000	52,000
7/16	11.0 mm	22	15,000 - 40,000	50,000
1/2	12.7 mm	24	15,000 - 40,000	45,000
5/8	16.0 mm	28	12,000 - 25,000	30,000
3/4	19.0 mm	30	10,000 - 20,000	24,000
1"	25.4 mm	36	7,500 - 20,000	22,000

*Speeds are for Standard Cut. Reduce by approximately 25% with addition of Dura-Cut. Fine Cut increases flute count approximately 50%. Decrease speed accordingly. Coarse Cut decreases flute count approximately 20%. Increase speed accordingly. Lower listed speeds when cutting harder ferrous materials.

Ultra-Tool® Burrs feature higher hardness and a greater flute count than most competing brands for increased tool life.

Burr heads and solid carbide burrs are manufactured from Ultra-Carb®. Shanks are high speed steel hardened to a rating of 45-48 Rockwell C.



#1 Standard, #2 Fine, #3 Coarse, #4 DuraCut, #5 CoarseDura, #6 FineDura, #7 Fast Mill, #8 Diamond. In the event of extended lead times the next closest cut style within the same pricing category may be substituted to enhance service levels.

Burr Specifications:

Standard cylindrical helix angle: 30° ± 2°

Cutting Diameter: ± .010

Flute Count: ± 1

Shank Diameter: +0 / -.0005, TIR max .002

Brazed Burr TIR: max .005

Taper Angles: ± 1°